

**ASBESTOS AND LIMITED  
LEAD-BASED PAINT  
SURVEY**

Proposed Christian Science First Church  
3303 Via Lido  
Newport Beach, CA 92663

*Prepared for:*  
The Wieland Davco Corporation  
4162 English Oak Drive  
Lansing, Michigan 48911

PSI Project # 0588483-1

*Prepared by:*  
Professional Service Industries, Inc.  
6330 Gateway Drive, Suite B  
Cypress, CA 90630

September 27, 2012



---

Gregory R. Archung, CAC, CDPH I/A  
Department Manager



---

Robert W. White, REA, CAC  
Principal Consultant

This report has been prepared for the exclusive use of The Wieland Davco Corporation and affiliates thereof. Results are based solely on the methodology stated in this report and the report should be relied upon in its entirety. Any reliance a third party makes of this report is the responsibility of such third party.

# TABLE OF CONTENTS

	SECTION
<b>EXECUTIVE SUMMARY</b> .....	<b>1</b>
<b>RESULTS SUMMARY</b> .....	<b>2</b>
<b>WARRANTY</b> .....	<b>3</b>
<b>METHODS</b> .....	<b>4</b>
<b>NOTICES, PERMITS, AND LICENSES</b> .....	<b>5</b>
<b>DRAWINGS</b> .....	<b>6</b>
<b>APPENDICES</b> .....	<b>7</b>
Inspector Certifications	
Laboratory Results and Chain of Custody Documentation	
Codes and Regulations	

# SECTION 1

## *Executive Summary*

### **GENERAL INFORMATION**

Professional Service Industries, Inc. (PSI) was retained by The Wieland-Davco Corp. to perform a survey for asbestos, including limited sampling for lead-based paint, at the Christian Science First Church located at 3303 Via Lido, Newport Beach, California. The survey included both interior and exterior materials at the church in preparation for demolition.

### **AUTHORIZATION**

Written authorization to perform this survey was provided by the Wieland-Davco Corporation in the form of the execution of PSI proposal number 0588-72237 dated August 7, 2012.

### **SUMMARY OF FINDINGS**

The scope of work included the identification of suspect asbestos-containing materials (ACM) and major interior building components painted with lead-based paint. PSI's scope of work was limited to asbestos and lead, and therefore did not address fluorescent tubes, potential PCB, mold, and mercury-containing materials. The inspection was conducted on August 16, 21, and 24, 2012, by PSI Department Manager Gregory R. Archung, CAC #92-0041 and CDPH Lead Inspector/Assessor #390.

#### **Asbestos-Containing Materials**

A total of seventy-seven (81) samples of suspect ACM representing twenty-eight (28) types of homogeneous materials were collected from the building. Materials sampled included floor tiles and associated mastic, sheet flooring and associated glue, acoustic ceiling tiles and associated mastic, wall plaster, drywall system, roof core, and roof flashing and associated mastic.

Laboratory results indicated detectable levels of asbestos in roof flashing, roof mastic, joint compound, air cell debris, 9" floor tile and associated mastic, mudded joint/ceiling, white sheet flooring and associated mastic, beige 12" floor tile and associated mastic, brown mastic, and acoustic ceiling. A summary of laboratory result information is listed in Section 2 of this report.

#### **Lead-Based Paint**

A total of three (3) samples were collected from the building for lead analysis during the survey. Two of the three paint chip samples collected had detectable levels of lead. A summary of laboratory result information is listed in Section 2 of this report.

## SECTION 2 Results Summary

### ACM SURVEY RESULTS

A material is considered by the Environmental Protection Agency (EPA) to be asbestos-containing if at least one sample collected from an area shows asbestos present in an amount greater than one percent (1%). In the State of California, the Department of Occupational Safety and Health (DOSH) considers a material to be asbestos-containing construction material (ACCM) if at least one sample collected from the area shows asbestos present in an amount greater than one-tenth of one percent (>0.1%). Specific removal and licensing requirements apply if ACM or ACCM will be disturbed during maintenance, renovation, or demolition activities.

The following homogeneous building material types were sampled as part of this survey. Results are summarized in the tables below.

MTL #.	MATERIAL DESCRIPTION	LOCATION	EPA CAT	COND. <sup>2</sup>	NO. OF SAMPLES	% ACM	QUANTITY
01	Roof Core 5 Layers	Utility Roofs	NA	G	3	ND	1,500 SF
02	Roof Flashing	Utility Roofs	NA	G	3	ND	1,200 SF
<b>03</b>	<b>Gray/Black Roof Mastic</b>	<b>Roof: Vents, Duct Seams, Roof Drains, Parapet Vents, Elec. Pipe</b>	<b>CAT I</b>	<b>G</b>	<b>3</b>	<b>Mastic= 2% CH</b>	<b>400 SF</b>
04	Brown/Black 3 layers	Roof under Spanish Tiles	NA	F	3	ND	12,500 SF
05	Plaster Walls	Throughout	NA	G	7	ND	14,000 SF
06	Gray Blown Insulation	Ceiling Crawlspace	NA	F	3	ND	14,000 SF
07	Tan Paper Above Ceiling Tiles	Ceiling Crawlspace	NA	F	3	ND	14,000 SF
<b>08</b>	<b>Gray Air Cell Debris</b>	<b>Under Rolled FG Insulation Ceiling Crawlspace</b>	<b>RACM</b>	<b>P</b>	<b>2</b>	<b>Debris= 30% CH</b>	<b>Unknown</b>
09	Black Vapor Barrier	Throughout	NA	G	3	ND	20,000 SF
<b>10</b>	<b>9" White Floor Tile/Black Mastic</b>	<b>Loft Room</b>	<b>CAT I</b>	<b>F</b>	<b>2</b>	<b>Tile= 3% CH Mastic= 5% CH</b>	<b>100 SF</b>
11	1' x 1' Ceiling Tile	Throughout	NA	F	3	ND	14,000 SF
12	Brown Base Cove Glue	Throughout	RACM	G	3	<1% CH	3,800 LF
13	Beige Mudded Joint	Ceiling Crawl Space	RACM	G	1	15% CH	7 Visible
14	White Mosaic Sheet Flooring/Mastic/Beige FT/Black Mastic	Floral Room	CAT I	F	2	Floor Tile= 2% CH Mastic= 2% CH Sheet Flooring= ND	100 SF
15	12" Beige FT/ Black Mastic	Under Carpet Teller Room, SW Bathroom	CAT I	F	2	Tile= 3% CH Mastic= 7% CH	200 SF
16	Beige SF/Mastic	Child Care Bathroom	CAT I	F	2	SF= ND Mastic= 5% CH	25 SF
17	Floot/ Black Mastic	Sunday School, Auditorium	NA	F	1	FL-ND M-ND	500 SF
18	Brown Mastic	Auditorium	CAT I	G	1	6% CH	50 SF
19	White Acoustic Ceiling Plaster	Reading Room (R.R.), Committee, Sales Rooms	RACM	G	3	2% CH	2,000 SF
20	Wall Plaster	R.R. Building	NA	G	5	ND	4,000 SF
21	Gray Blown in Insulation	R.R. Bldg. Ceiling Space	NA	F	3	ND	2,000 SF
22	Black Roof Debris	R.R. Bldg. Ceiling Space	CAT I	P	3	<1% CH	Unknown
23	Black Roof Core	Reading Room: Roof	NA	NA	3	ND	1,500 SF
24	Roof Flashing Core	Reading Room: Roof	CAT I	G	3	Shingle = ND Felt= 10% CH	200 SF
25	Gray/Black Roof Mastic	RR Roof: Vents, Duct Seams, Parapet Vents, etc.	CAT I	G	3	6-7% CH	75 SF
26	Exterior Plaster	R.R.: Throughout	RACM	F	3	<1% CH	1,800 SF
27	Exterior Plaster	Church: Throughout	NF	G	5	ND	8,000 SF
28	Drywall/ Joint Compound	Former Organ Motor Room	RACM	F	3	JC= 2% CH DW= ND	250 SF

<sup>1</sup>F=Friable; NF=Non-friable Friability is further defined in section 4

<sup>2</sup>Cond. = Condition of Materials (Good, Fair, Poor)

SF = Square feet LF = Linear feet NA = Not applicable

ND = No asbestos detected CH = Chrysotile DW = Drywall JC = Joint Compound

When samples analyzed by Polarized Light Microscopy contain asbestos in amounts less than ten percent (<10%), a more exact method of analysis called point counting may be performed at the client's request. The EPA point count method allows a sample in which asbestos was visually detected, but which is visually estimated to have 10% or less asbestos, to be more accurately quantified. EPA required point counting for sample results of <1% asbestos. If not point counted, a sample in which asbestos was visually detected and estimated (including trace to ≤1%) must be assumed to be greater than 1% and treated as ACM. PSI recommends point counting of the base cove glue ( material group 12), black roofing debris (material group 22), and exterior plaster (material group 26).

**LEAD-CONTAINING MATERIALS RESULTS**

Lead was not detected in the paint chip samples collected. Federal efforts to regulate Lead Based Paint (LBP) began with the enactment of the Lead-Based Paint Poison Prevention Act (LBPPPA) in 1971. In 1973, the Consumer Product Safety Commission (CPSC) defined lead-based paint as paint having lead content equal to or greater than 0.5 percent by weight in a dry film of newly applied paint. In 1978, the CPSC lowered the allowable lead levels in new paint to 0.06%. The Housing and Urban Development Agency (HUD) developed guidelines relating to HUD facilities. The HUD guidelines specified lead content of 0.5% as an action level in determining the need for corrective action. Federal and State Occupational Health and Safety Administration (Fed-OSHA 29 CFR 1920.1025 and DOSH under Title 8 CCR 1532.1) do not define the amount of lead in paint to a regulatory requirement; rather the activities or task define when the regulation is in effect. Both Federal and State standards use the term “trigger task” activities. In the work place, employers must make certain assumptions of the exposure levels and comply with the regulations based on the level of disturbance rather than the lead level.

The following materials were sampled for lead content as part of this survey. Results are summarized in the tables below:

**Painted Representative Surfaces**

SAMPLE NO.	MATERIAL DESCRIPTION	LOCATION	CONDITIONS	RESULT % LEAD BY WEIGHT	QUANTITY
Pb-CS-01	White Wall/ Plaster	Throughout/Auditorium	G	0.017 %	30,000 SF
Pb-CS-02	White Wall/ Plaster	Throughout/ Exterior	P	< 0.010 %*	100 SF
Pb-CS-03	White Window/Wood	Exterior	P	0.067 %	50 SF

\*This result is below the Limit of Detection

Title 17, California Code of Regulations (CCR), Division 1, Chapter 8: *Accreditation, Certification and Work Practices for Lead-Based Paint and Lead Hazards*, defines lead-based paint as paint or other surfacing coating that contains an amount of lead equal to, or in excess of, one milligram per square centimeter (1.0 mg/cm<sup>2</sup>) or more than 0.5% by weight. The industry has interpreted this to mean that any detectable amount of lead is regulated. For example, employees who perform trigger tasks (such as manual demolition) are required to receive employer provided training, air monitoring, protective clothing, respirators, and hand washing facilities. In addition there are standard work practices required such as the use of wet methods and HEPA vacuums.

## **SECTION 3**

### ***Warranty***

PSI warrants that the findings contained herein have been prepared in general accordance with the standard of care exercised within the asbestos and lead-based paint testing and abatement industries. PSI recognizes that raw laboratory test data are not usually sufficient to make all abatement and management decisions.

The survey included inspection of reasonably accessible materials such as above or behind suspended ceilings, walls, or other non-permanent structures. PSI did not, however, inspect or sample inaccessible areas.

The information contained in this report is based upon the data furnished by The Wieland-Davco Corp., and observations and test results provided by PSI. These observations and results are time dependent and are subject to changing site conditions and revisions to Federal, State, and local regulations.

No other warranties are implied or expressed.

#### **Use by Third Parties**

This report was prepared pursuant to the contract PSI has with The Wieland-Davco Corp. That contractual relationship included an exchange of information about the subject sites that was unique and between PSI and The Wieland-Davco Corp. and serves as the basis upon which this report was prepared. Because of the importance of the communication between PSI and The Wieland-Davco Corp., reliance or any use of this report by anyone other than The Wieland-Davco Corp. for whom it was prepared is prohibited and therefore not foreseeable to PSI.

Reliance or use by any such third party without explicit authorization in the report does not make said third party a third party beneficiary to PSI's contract with The Wieland-Davco Corp.. Any such unauthorized reliance on or use of this report, including any of its information or conclusions, will be at third party's risk. For the same reasons, no warranties or representations, expressed or implied in this report, are made to any such third party.

#### **Unidentifiable Conditions**

This report is necessarily limited to the conditions observed and to the information available at the time of the work. Due to the nature of the work, there is a possibility that conditions may exist which could not be identified within the scope of work or which were not apparent at the time of our site work. This report is also limited to information available from Ross Stores, Inc. at the time it was prepared. The report may not represent all conditions at the subject sites as it only reflects the information gathered from specific locations.

## SECTION 4 Methods

### **ASBESTOS**

Inspection and sampling procedures were performed in accordance with the guidelines published by the EPA in 40 CFR Part 763 Subpart E, October 30, 1987. Sampling procedures include collection of at least three samples of all suspect friable and non-friable materials as recommended by EPA Guidance Document 700/B-92/001, February 1992. An EPA accredited inspector performed the inspection and survey as described below.

The survey consisted of three major activities: visual inspection, sampling, and quantification of building materials. Although these activities are listed separately, they are integrated tasks.

### **VISUAL INSPECTION**

An initial building walkthrough was conducted to determine the presence and condition of suspect materials that were accessible and/or exposed. Materials which were similar in general appearance were grouped into homogeneous sampling areas.

#### ■ Homogeneous Material Classifications

A preliminary walkthrough of the building was conducted to determine areas of materials which were visually similar in color, texture, general appearance, and which appeared to have been installed at the same time. Such materials are termed "homogeneous materials" by the EPA. During this walkthrough, the approximate locations of these homogeneous materials were also noted.

Following the EPA inspection protocol, each identified suspect homogeneous material was placed in one of the following EPA classifications:

1. **Surfacing Materials** (spray or trowel applied to building members).
2. **Thermal System Insulation** (materials generally applied to various mechanical systems).
3. **Miscellaneous Materials** (any materials which do not fit either of the above categories).

#### ■ Friability Classifications

A regulated asbestos-containing material (RACM) as defined by National Emissions Standard for Hazardous Air Pollutants (NESHAP), is any (a) Friable asbestos material, (b) Category I non-friable ACM that has become friable, (c) Category I non-friable ACM that will be or has been subjected to sanding, grinding, cutting, or abrading, or (d) Category II non-friable ACM that has a high probability of becoming or has become crumbled, pulverized, or reduced to powder by the forces expected to act on the material in the course of demolition or renovation operations.

Following the EPA inspection protocol, each identified suspect homogeneous material was placed in one of the following EPA classifications:

1. **Friable Materials** NESHAP defines a friable ACM as any material containing more than one percent asbestos that, when dry, can be crumbled, pulverized, or reduced to powder by hand pressure.
2. **Category I Non-friable** NESHAP defines a Category I non-friable ACM as packing, gaskets, resilient floor covering (except sheet flooring products which are considered friable), and asphalt roofing products which contain more than one percent asbestos.
3. **Category II Non-friable** NESHAP defines a Category II non-friable ACM as any material, except for a Category I non-friable ACM, which contains more than one percent asbestos and cannot be reduced to a powder by hand pressure when dry.

## **SAMPLING PROCEDURES**

Following the walkthrough, the inspector collected selected samples of accessible materials identified as suspect ACM.

EPA guidelines were used to determine the sampling protocol. Sampling locations were chosen to be representative of the homogeneous material.

Samples of surfacing material were collected in general accordance with the EPA sampling protocol outlined in the EPA publication, "Asbestos in Buildings: Simplified Sampling Scheme for Friable Surfacing Materials" (EPA 560/5-85-030a, October, 1985). Representative samples were taken preferentially from already damaged areas or areas which were the least visible.

Samples of miscellaneous materials were taken as randomly as possible, while again attempting to sample already damaged areas so as to minimize disturbance of the material. Multiple sampling was used to assess each miscellaneous material unless the total quantity of accessible material was less than 260 square feet.

## **QUANTIFICATION**

Quantities of accessible and/or exposed building materials that were suspected of containing asbestos were estimated. Taking approximate measurements in the field performed this estimation.

## **LABORATORY PROCEDURES**

### *Method of Analysis*

Analysis was performed at LA Testing's Laboratory in Garden Grove, California, a National Volunteer Laboratory Accreditation Program (NVLAP) accredited laboratory. A chain-of-custody, documenting the possession of the samples from the time they were collected until analyzed and stored, was submitted with the bulk samples. The original chain-of-custody accompanied the materials at all times. Custody documentation began at the time samples were collected and each transferor retained a copy of the chain-of-custody record.

Analysis was performed by using the bulk sample for visual observation and slide preparation(s) for microscopic examination and identification. The samples were mounted on slides and then analyzed for asbestos (chrysotile, amosite, crocidolite, anthophyllite, and actinolite/tremolite), fibrous non-asbestos constituents (mineral wool, paper, etc.) and non-fibrous constituents. Refractive indices, morphology, color, pleochroism, birefringence, extinction characteristics, and signs of elongation identified asbestos. The same characteristics were used to identify the non-asbestos constituents.



The microscopist visually estimated relative amounts of each constituent by determining the volume of each constituent in proportion to the total volume of the sample, using a stereoscope.

All bulk samples were analyzed by Polarized Light Microscopy (PLM) with dispersion staining as described by the method of the determination of asbestos in bulk insulation, EPA/600/R-93/116, July 1993. This is a standard method of analysis in optical mineralogy and the currently accepted method for the determination of asbestos in bulk samples. A suspect material is immersed in a solution of known refractive index and subjected to illumination by polarized light. The characteristic color displays which result enable mineral identification.

It should be noted that some ACM might not be accurately identified and/or quantified by PLM. As an example, the original fabrication of vinyl floor tiles routinely involved milling of asbestos fibers to extremely small sizes. As a result, these fibers may go undetected under the standard PLM method. Transmission Electron Microscopy (TEM) is recommended for a more definitive analysis of these materials.

For bulk samples which are found to contain <1% asbestos, Point Count Analysis as described by the method for the determination of asbestos in accordance with Environmental Protection Agency's (EPA) "Interim Method for Identification of Asbestos in Bulk Insulation Samples" (40 CFR 763, Appendix A, Subpart F), is often utilized. As part of this method, a bulk sample is reduced, in an effort to dissolve any non-asbestos constituents, such as calcite. As a result of this reduction process, a concentrated sample is then obtained and analyzed. In California a minimum number of counts for each sample is 1000. The number of identified asbestos points is divided by 1000, then multiplied by 100 in order to calculate the percentage. Each asbestos type is quantified individually.

## **LEAD-BASED PAINT**

This survey was prepared in anticipation of possible renovation of the building. Survey activities included the sampling of exterior lead-based paint on major building components with sample locations provided in the drawings set forth in Section 6 of this report. Major exterior building components were selected and paint-chip and bulk sampling was performed.

## **SAMPLING PROCEDURES**

Following the walk-through, the inspector performed paint-chip and bulk sampling of the selected building component. The paint chip sample was an approximately 2" x 2" chip that represents all potential paint layers.

## **LABORATORY PROCEDURES**

### *Method of Analysis*

Analysis was performed at LA Testing's Laboratory in Garden Grove, California, an Environmental Lead Laboratory Accreditation Program (ELLAP) accredited laboratory, using the method for determination of lead in paint-chip samples. The lead analysis was performed using a Flame Atomic Absorption Spectrophotometer (FLAA) (Method 7420). The FLAA burner head was first lit by opening the flow regulator on the acetylene tank, and was allowed to thermally stabilize before any analysis procedures could begin. The samples were filtered and examined after placing in an auto-sampler tube. The FLAA was calibrated using a known lead standard. After the FLAA calibration procedure was completed, the lead-chip samples were analyzed by the FLAA.

### *Laboratory Quality Control Program*

LA Testing's Laboratory is AIHA accredited and participates in the AIHA, ELLAP, and ELPAT performance rounds as part of the accreditation requirements. Quality control procedures at the laboratory monitor the proficiency of the technicians and the reliability of the results, and include the insertion of various samples into the sample stream for quality assurance. The laboratory demonstrates proficiency with each analytical method used, including documentation of precision and accuracy, and maintenance of detection limit information.

## **SECTION 5**

### ***Notices, Permits, and Licenses***

If the ACM identified in this report will be disturbed through future maintenance, renovation, or demolition activities, they will be subject to the requirements set forth in all applicable local, state, and federal regulations.

The following notices, permits, and licenses are necessary for abatement work as of the date of this report. The abatement contractor is cautioned to verify these requirements as applicable to the final project scope and confirm that no new requirements exist.

#### **LOCAL AIR QUALITY BOARD**

Written notification is required to the South Coast Air Quality Management District at least 14 days prior to beginning any work on friable or non-friable ACM of 100 square feet or greater. This requirement is also enforced by the EPA.

The following notices, permits and licenses are necessary for abatement work as of the date of this report. The abatement contractor is cautioned to verify these requirements as applicable to the final project scope and confirm that no new requirements exist.

#### **LICENSES**

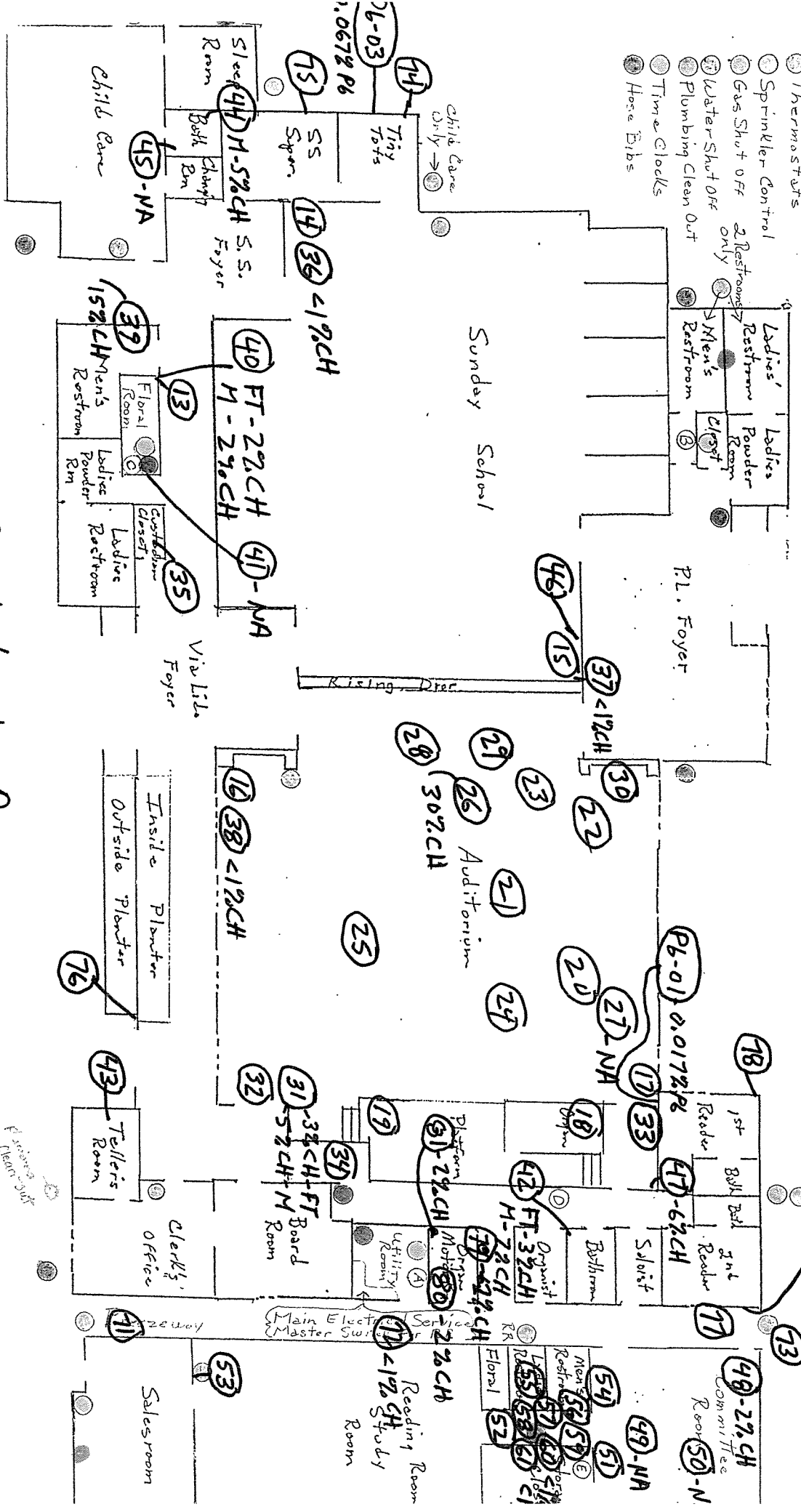
The Abatement Contractor must maintain current licenses as required by applicable state or local jurisdictions for the removal, transporting, disposal, or other regulated activity.

**SECTION 6**  
*Drawings*

- Fire Extinguisher
- Electric Panel Boards
- Thermostats
- Sprinkler Control
- Gas Shut Off
- Water Shut Off
- Plumbing Clean Out
- Time Clocks
- Hose Bibs

Main Water Shut Off

Parking Lot



Sample Location Diagram

All Samples are negatived unless otherwise noted.



**SECTION 7**  
***Appendices***

## INSPECTOR CERTIFICATIONS



State of California  
Division of Occupational Safety and Health  
**Certified Asbestos Consultant**

**Gregory R Archung**



Name

Certification No. **92-0041**

Expires on **06/17/13**

This certification was issued by the Division of Occupational Safety and Health as authorized by Sections 7180 et seq. of the Business and Professions Code.

State of California Department of Public Health

Lead-Related  
Construction  
Certificate

Certificate  
Type

Expiration  
Date



Inspector/Assessor	11/07/2012
★ Project Designer	11/07/2012
Project Monitor	11/07/2012



Gregory R. Archung

ID #: 390

**LABORATORY RESULTS AND CHAIN OF CUSTODY DOCUMENTATION**  
**ASBESTOS**



# LA Testing

11652 Knott Street Unit F5, Garden Grove, CA 92841

Phone/Fax: (714) 828-4999 / (714) 828-4944

[losalamitoslab@latesting.com](mailto:losalamitoslab@latesting.com)

LA Testing Order:	331212146
CustomerID:	32PRSV78
CustomerPO:	
ProjectID:	The Wieland-Davco

Attn: **Greg Archung**  
**PSI - Professional Services, Inc.**  
**6330 Gateway Drive**  
**Suite B**  
**Cypress, CA 90630**

Phone: (714) 484-8600  
 Fax:  
 Received: 08/21/12 8:20 AM  
 Analysis Date: 8/27/2012  
 Collected: 8/16/2012

Project: 0588483-1 / The Wieland-Davco Corp / Christian Science First Church / 3303 Via Lido Newport Beach CA

## Test Report: Asbestos Analysis of Bulk Materials via EPA 600/R-93/116 and/or EPA 600/M4-82-020 Method(s) using Polarized Light Microscopy

Sample	Description	Appearance	Non-Asbestos		Asbestos
			% Fibrous	% Non-Fibrous	% Type
1-CS-01-Shingle 331212146-0001	Roof Core / Utility Roofs / Southeast	White/Black Fibrous Heterogeneous	12% Glass	88% Non-fibrous (other)	None Detected
1-CS-01-Roofing 1 331212146-0001A	Roof Core / Utility Roofs / Southeast	Black Fibrous Heterogeneous	10% Glass	90% Non-fibrous (other)	None Detected
1-CS-01-Roofing 2 331212146-0001B	Roof Core / Utility Roofs / Southeast	Black Fibrous Heterogeneous	10% Glass	90% Non-fibrous (other)	None Detected
1-CS-01-Roofing 3 331212146-0001C	Roof Core / Utility Roofs / Southeast	Black Fibrous Heterogeneous	10% Glass 2% Cellulose	88% Non-fibrous (other)	None Detected
1-CS-01-Felt 331212146-0001D	Roof Core / Utility Roofs / Southeast	Gray/Black Fibrous Heterogeneous	85% Cellulose	15% Non-fibrous (other)	None Detected
1-CS-02-Shingle 331212146-0002	Roof Core / Utility Roofs / Middle	White/Black Fibrous Heterogeneous	12% Glass	88% Non-fibrous (other)	None Detected
1-CS-02-Roofing 1 331212146-0002A	Roof Core / Utility Roofs / Middle	Black Fibrous Heterogeneous	10% Glass	90% Non-fibrous (other)	None Detected
1-CS-02-Roofing 2 331212146-0002B	Roof Core / Utility Roofs / Middle	Black Non-Fibrous Homogeneous	10% Glass	90% Non-fibrous (other)	None Detected

### Analyst(s)

Christopher Kim (33)

Krystyn Gonzales (29)

Jeffrey Deboo (36)

Derrick Tanner, Laboratory Manager  
or other approved signatory

EMSL maintains liability limited to cost of analysis. This report relates only to the samples reported and may not be reproduced, except in full, without written approval by EMSL. EMSL bears no responsibility for sample collection activities or analytical method limitations. Interpretation and use of test results are the responsibility of the client. This report must not be used by the client to claim product certification, approval, or endorsement by NVLAP, NIST or any agency of the federal government. Non-friable organically bound materials present a problem matrix and therefore EMSL recommends gravimetric reduction prior to analysis. Samples received in good condition unless otherwise noted. Estimated accuracy, precision and uncertainty data available upon request. Unless requested by the client, building materials manufactured with multiple layers (i.e. linoleum, wallboard, etc.) are reported as a single sample. Reporting limit is 1%  
 Samples analyzed by LA Testing Garden Grove, CA NVLAP Lab Code 101384-0, CA ELAP 1406

Initial report from 08/27/2012 15:51:49



# LA Testing

11652 Knott Street Unit F5, Garden Grove, CA 92841

Phone/Fax: (714) 828-4999 / (714) 828-4944

[losalamitoslab@latesting.com](mailto:losalamitoslab@latesting.com)

LA Testing Order:	331212146
CustomerID:	32PRSV78
CustomerPO:	
ProjectID:	The Wieland-Davco

Attn: **Greg Archung**  
**PSI - Professional Services, Inc.**  
**6330 Gateway Drive**  
**Suite B**  
**Cypress, CA 90630**

Phone: (714) 484-8600  
 Fax:  
 Received: 08/21/12 8:20 AM  
 Analysis Date: 8/27/2012  
 Collected: 8/16/2012

Project: 0588483-1 / The Wieland-Davco Corp / Christian Science First Church / 3303 Via Lido Newport Beach CA

## Test Report: Asbestos Analysis of Bulk Materials via EPA 600/R-93/116 and/or EPA 600/M4-82-020 Method(s) using Polarized Light Microscopy

Sample	Description	Appearance	Non-Asbestos		Asbestos
			% Fibrous	% Non-Fibrous	% Type
1-CS-02-Roofing 3 331212146-0002C	Roof Core / Utility Roofs / Middle	Black Fibrous Heterogeneous	8% Glass	92% Non-fibrous (other)	None Detected
1-CS-02-Felt 331212146-0002D	Roof Core / Utility Roofs / Middle	Gray/Black Fibrous Homogeneous	90% Cellulose	10% Non-fibrous (other)	None Detected
1-CS-03-Shingle 331212146-0003	Roof Core / Utility Roofs / Southwest	White/Black Fibrous Heterogeneous	10% Glass	90% Non-fibrous (other)	None Detected
1-CS-03-Roofing 1 331212146-0003A	Roof Core / Utility Roofs / Southwest	Black Fibrous Homogeneous	8% Glass	92% Non-fibrous (other)	None Detected
1-CS-03-Roofing 2 331212146-0003B	Roof Core / Utility Roofs / Southwest	Black Fibrous Homogeneous	6% Glass	94% Non-fibrous (other)	None Detected
1-CS-03-Roofing 3 331212146-0003C	Roof Core / Utility Roofs / Southwest	Black Fibrous Homogeneous	8% Glass	92% Non-fibrous (other)	None Detected
1-CS-03-Felt 331212146-0003D	Roof Core / Utility Roofs / Southwest	Gray/Black Fibrous Homogeneous	80% Cellulose	20% Non-fibrous (other)	None Detected
2-CS-04-Shingle 331212146-0004	Roof Flashing / Utility Roofs / North	White/Black Fibrous Heterogeneous	12% Glass	88% Non-fibrous (other)	None Detected

### Analyst(s)

Christopher Kim (33)  
Jeffrey Deboo (36)

Krystyn Gonzales (29)

Derrick Tanner, Laboratory Manager  
or other approved signatory

EMSL maintains liability limited to cost of analysis. This report relates only to the samples reported and may not be reproduced, except in full, without written approval by EMSL. EMSL bears no responsibility for sample collection activities or analytical method limitations. Interpretation and use of test results are the responsibility of the client. This report must not be used by the client to claim product certification, approval, or endorsement by NVLAP, NIST or any agency of the federal government. Non-friable organically bound materials present a problem matrix and therefore EMSL recommends gravimetric reduction prior to analysis. Samples received in good condition unless otherwise noted. Estimated accuracy, precision and uncertainty data available upon request. Unless requested by the client, building materials manufactured with multiple layers (i.e. linoleum, wallboard, etc.) are reported as a single sample. Reporting limit is 1%  
 Samples analyzed by LA Testing Garden Grove, CA NVLAP Lab Code 101384-0, CA ELAP 1406

Initial report from 08/27/2012 15:51:49



**LA Testing**

11652 Knott Street Unit F5, Garden Grove, CA 92841

Phone/Fax: (714) 828-4999 / (714) 828-4944

[losalamitoslab@latesting.com](mailto:losalamitoslab@latesting.com)

LA Testing Order:	331212146
CustomerID:	32PRSV78
CustomerPO:	
ProjectID:	The Wieland-Davco

Attn: **Greg Archung**  
**PSI - Professional Services, Inc.**  
**6330 Gateway Drive**  
**Suite B**  
**Cypress, CA 90630**

Phone: (714) 484-8600  
 Fax:  
 Received: 08/21/12 8:20 AM  
 Analysis Date: 8/27/2012  
 Collected: 8/16/2012

Project: 0588483-1 / The Wieland-Davco Corp / Christian Science First Church / 3303 Via Lido Newport Beach CA

**Test Report: Asbestos Analysis of Bulk Materials via EPA 600/R-93/116 and/or EPA 600/M4-82-020 Method(s) using Polarized Light Microscopy**

Sample	Description	Appearance	Non-Asbestos		Asbestos
			% Fibrous	% Non-Fibrous	% Type
2-CS-04-Roofing 331212146-0004A	Roof Flashing / Utility Roofs / North	Black Fibrous Heterogeneous	8% Glass	92% Non-fibrous (other)	None Detected
2-CS-04-Felt 331212146-0004B	Roof Flashing / Utility Roofs / North	Gray/Black Fibrous Homogeneous	85% Cellulose	15% Non-fibrous (other)	None Detected
2-CS-05-Shingle 1 331212146-0005	Roof Flashing / Utility Roofs / East	White/Black Fibrous Heterogeneous	12% Glass	88% Non-fibrous (other)	None Detected
2-CS-05-Shingle 2 331212146-0005A	Roof Flashing / Utility Roofs / East	White/Black/Grayish Fibrous Heterogeneous	10% Glass	90% Non-fibrous (other)	None Detected
2-CS-05-Roofing 331212146-0005B	Roof Flashing / Utility Roofs / East	Black Fibrous Heterogeneous	10% Glass	90% Non-fibrous (other)	None Detected
2-CS-06-Shingle 331212146-0006	Roof Flashing / Utility Roofs / South	White/Black Fibrous Heterogeneous	10% Glass	90% Non-fibrous (other)	None Detected
2-CS-06-Felt 331212146-0006A	Roof Flashing / Utility Roofs / South	Black Fibrous Homogeneous	25% Cellulose	75% Non-fibrous (other)	None Detected
3-CS-07 331212146-0007	Roof Mastic / North Vent Pipe	Black Non-Fibrous Homogeneous	15% Cellulose	85% Non-fibrous (other)	None Detected

Analyst(s)

Christopher Kim (33)                      Krystyn Gonzales (29)  
 Jeffrey Deboo (36)

Derrick Tanner, Laboratory Manager  
or other approved signatory

EMSL maintains liability limited to cost of analysis. This report relates only to the samples reported and may not be reproduced, except in full, without written approval by EMSL. EMSL bears no responsibility for sample collection activities or analytical method limitations. Interpretation and use of test results are the responsibility of the client. This report must not be used by the client to claim product certification, approval, or endorsement by NVLAP, NIST or any agency of the federal government. Non-friable organically bound materials present a problem matrix and therefore EMSL recommends gravimetric reduction prior to analysis. Samples received in good condition unless otherwise noted. Estimated accuracy, precision and uncertainty data available upon request. Unless requested by the client, building materials manufactured with multiple layers (i.e. linoleum, wallboard, etc.) are reported as a single sample. Reporting limit is 1%  
 Samples analyzed by LA Testing Garden Grove, CA NVLAP Lab Code 101384-0, CA ELAP 1406

Initial report from 08/27/2012 15:51:49



# LA Testing

11652 Knott Street Unit F5, Garden Grove, CA 92841

Phone/Fax: (714) 828-4999 / (714) 828-4944

[losalamitoslab@latesting.com](mailto:losalamitoslab@latesting.com)

LA Testing Order:	331212146
CustomerID:	32PRSV78
CustomerPO:	
ProjectID:	The Wieland-Davco

Attn: **Greg Archung**  
**PSI - Professional Services, Inc.**  
**6330 Gateway Drive**  
**Suite B**  
**Cypress, CA 90630**

Phone: (714) 484-8600  
 Fax:  
 Received: 08/21/12 8:20 AM  
 Analysis Date: 8/27/2012  
 Collected: 8/16/2012

Project: 0588483-1 / The Wieland-Davco Corp / Christian Science First Church / 3303 Via Lido Newport Beach CA

## Test Report: Asbestos Analysis of Bulk Materials via EPA 600/R-93/116 and/or EPA 600/M4-82-020 Method(s) using Polarized Light Microscopy

Sample	Description	Appearance	Non-Asbestos		Asbestos
			% Fibrous	% Non-Fibrous	% Type
3-CS-08 331212146-0008	Roof Mastic / South Duct	Gray Non-Fibrous Homogeneous		100% Non-fibrous (other)	None Detected
3-CS-09 331212146-0009	Roof Mastic / Northeast Electrical Box	Black/Silver Fibrous Heterogeneous	15% Cellulose	83% Non-fibrous (other)	2% Chrysotile
4-CS-10-Shingle 1 331212146-0010	Roof Felt / Roof under Spanish Tiles / Southeast	Brown/Red/Black Fibrous Heterogeneous	10% Glass	90% Non-fibrous (other)	None Detected
4-CS-10-Shingle 2 331212146-0010A	Roof Felt / Roof under Spanish Tiles / Southeast	Brown/Black Fibrous Heterogeneous	10% Glass	90% Non-fibrous (other)	None Detected
4-CS-10-Felt 331212146-0010B	Roof Felt / Roof under Spanish Tiles / Southeast	Black Fibrous Homogeneous	70% Cellulose	30% Non-fibrous (other)	None Detected
4-CS-11-Shingle 1 331212146-0011	Roof Felt / Roof under Spanish Tiles / South	Brown/Red/Black Fibrous Heterogeneous	12% Glass	88% Non-fibrous (other)	None Detected
4-CS-11-Shingle 2 331212146-0011A	Roof Felt / Roof under Spanish Tiles / South	Brown/Black Fibrous Heterogeneous	10% Glass	90% Non-fibrous (other)	None Detected
4-CS-11-Felt 331212146-0011B	Roof Felt / Roof under Spanish Tiles / South	Black Fibrous Homogeneous	75% Cellulose	25% Non-fibrous (other)	None Detected

### Analyst(s)

Christopher Kim (33)  
Jeffrey Deboo (36)

Krystyn Gonzales (29)

Derrick Tanner, Laboratory Manager  
or other approved signatory

EMSL maintains liability limited to cost of analysis. This report relates only to the samples reported and may not be reproduced, except in full, without written approval by EMSL. EMSL bears no responsibility for sample collection activities or analytical method limitations. Interpretation and use of test results are the responsibility of the client. This report must not be used by the client to claim product certification, approval, or endorsement by NVLAP, NIST or any agency of the federal government. Non-friable organically bound materials present a problem matrix and therefore EMSL recommends gravimetric reduction prior to analysis. Samples received in good condition unless otherwise noted. Estimated accuracy, precision and uncertainty data available upon request. Unless requested by the client, building materials manufactured with multiple layers (i.e. linoleum, wallboard, etc.) are reported as a single sample. Reporting limit is 1%  
 Samples analyzed by LA Testing Garden Grove, CA NVLAP Lab Code 101384-0, CA ELAP 1406

Initial report from 08/27/2012 15:51:49



# LA Testing

11652 Knott Street Unit F5, Garden Grove, CA 92841

Phone/Fax: (714) 828-4999 / (714) 828-4944

[losalamitoslab@latesting.com](mailto:losalamitoslab@latesting.com)

LA Testing Order:	331212146
CustomerID:	32PRSV78
CustomerPO:	
ProjectID:	The Wieland-Davco

Attn: **Greg Archung**  
**PSI - Professional Services, Inc.**  
**6330 Gateway Drive**  
**Suite B**  
**Cypress, CA 90630**

Phone: (714) 484-8600  
 Fax:  
 Received: 08/21/12 8:20 AM  
 Analysis Date: 8/27/2012  
 Collected: 8/16/2012

Project: 0588483-1 / The Wieland-Davco Corp / Christian Science First Church / 3303 Via Lido Newport Beach CA

## Test Report: Asbestos Analysis of Bulk Materials via EPA 600/R-93/116 and/or EPA 600/M4-82-020 Method(s) using Polarized Light Microscopy

Sample	Description	Appearance	Non-Asbestos		Asbestos
			% Fibrous	% Non-Fibrous	% Type
4-CS-12-Shingle 331212146-0012	Roof Felt / Roof under Spanish Tiles / Southwest	Brown Fibrous Heterogeneous	15% Glass	85% Non-fibrous (other)	None Detected
4-CS-12-Felt 331212146-0012A	Roof Felt / Roof under Spanish Tiles / Southwest	Brown Fibrous Homogeneous	50% Cellulose	50% Non-fibrous (other)	None Detected
5-CS-13-Finish Coat 331212146-0013	Plaster Walls / Throughout / Floral	White Non-Fibrous Homogeneous		100% Non-fibrous (other)	None Detected
5-CS-13-Base Coat 331212146-0013A	Plaster Walls / Throughout / Floral	Grayish Non-Fibrous Homogeneous		100% Non-fibrous (other)	None Detected
5-CS-14-Finish Coat 331212146-0014	Plaster Walls / Throughout / SS Super	White Non-Fibrous Homogeneous		100% Non-fibrous (other)	None Detected
5-CS-14-Base Coat 331212146-0014A	Plaster Walls / Throughout / SS Super	Grayish Non-Fibrous Homogeneous		100% Non-fibrous (other)	None Detected
5-CS-15-Finish Coat 331212146-0015	Plaster Walls / Throughout / Sunday School (SS)	White Non-Fibrous Homogeneous		100% Non-fibrous (other)	None Detected
5-CS-15-Base Coat 331212146-0015A	Plaster Walls / Throughout / Sunday School (SS)	Beige Non-Fibrous Homogeneous		100% Non-fibrous (other)	None Detected

### Analyst(s)

Christopher Kim (33)

Krystyn Gonzales (29)

Jeffrey Deboo (36)

Derrick Tanner, Laboratory Manager or other approved signatory

EMSL maintains liability limited to cost of analysis. This report relates only to the samples reported and may not be reproduced, except in full, without written approval by EMSL. EMSL bears no responsibility for sample collection activities or analytical method limitations. Interpretation and use of test results are the responsibility of the client. This report must not be used by the client to claim product certification, approval, or endorsement by NVLAP, NIST or any agency of the federal government. Non-friable organically bound materials present a problem matrix and therefore EMSL recommends gravimetric reduction prior to analysis. Samples received in good condition unless otherwise noted. Estimated accuracy, precision and uncertainty data available upon request. Unless requested by the client, building materials manufactured with multiple layers (i.e. linoleum, wallboard, etc.) are reported as a single sample. Reporting limit is 1%  
 Samples analyzed by LA Testing Garden Grove, CA NVLAP Lab Code 101384-0, CA ELAP 1406

Initial report from 08/27/2012 15:51:49





# LA Testing

11652 Knott Street Unit F5, Garden Grove, CA 92841

Phone/Fax: (714) 828-4999 / (714) 828-4944

[losalamitoslab@latesting.com](mailto:losalamitoslab@latesting.com)

LA Testing Order:	331212146
CustomerID:	32PRSV78
CustomerPO:	
ProjectID:	The Wieland-Davco

Attn: **Greg Archung**  
**PSI - Professional Services, Inc.**  
**6330 Gateway Drive**  
**Suite B**  
**Cypress, CA 90630**

Phone: (714) 484-8600  
 Fax:  
 Received: 08/21/12 8:20 AM  
 Analysis Date: 8/27/2012  
 Collected: 8/16/2012

Project: 0588483-1 / The Wieland-Davco Corp / Christian Science First Church / 3303 Via Lido Newport Beach CA

## Test Report: Asbestos Analysis of Bulk Materials via EPA 600/R-93/116 and/or EPA 600/M4-82-020 Method(s) using Polarized Light Microscopy

Sample	Description	Appearance	Non-Asbestos		Asbestos
			% Fibrous	% Non-Fibrous	% Type
5-CS-16 331212146-0016	Plaster Walls / Throughout / NE Auditorium	White/Beige Non-Fibrous Heterogeneous		100% Non-fibrous (other)	None Detected
Unable to separate finish coat and base coat layers for analysis.					
5-CS-17-Finish Coat 331212146-0017	Plaster Walls / Throughout / SW Auditorium	White Non-Fibrous Homogeneous		100% Non-fibrous (other)	None Detected
5-CS-17-Base Coat 331212146-0017A	Plaster Walls / Throughout / SW Auditorium	Gray Non-Fibrous Homogeneous		100% Non-fibrous (other)	None Detected
5-CS-18-Finish Coat 331212146-0018	Plaster Walls / Throughout / S Loft Area	White Non-Fibrous Homogeneous		100% Non-fibrous (other)	None Detected
5-CS-18-Base Coat 331212146-0018A	Plaster Walls / Throughout / S Loft Area	Gray Non-Fibrous Homogeneous		100% Non-fibrous (other)	None Detected
5-CS-19-Finish Coat 331212146-0019	Plaster Walls / Throughout / N Loft Area	White Non-Fibrous Homogeneous		100% Non-fibrous (other)	None Detected
5-CS-19-Base Coat 331212146-0019A	Plaster Walls / Throughout / N Loft Area	Gray Non-Fibrous Homogeneous		100% Non-fibrous (other)	None Detected
6-CS-20 331212146-0020	Blown Insulation Mineral Wool / Crawlspace / South	Gray Fibrous Homogeneous	90% Min. Wool	10% Non-fibrous (other)	None Detected

### Analyst(s)

Christopher Kim (33)

Krystyn Gonzales (29)

Jeffrey Deboo (36)

Derrick Tanner, Laboratory Manager  
or other approved signatory

EMSL maintains liability limited to cost of analysis. This report relates only to the samples reported and may not be reproduced, except in full, without written approval by EMSL. EMSL bears no responsibility for sample collection activities or analytical method limitations. Interpretation and use of test results are the responsibility of the client. This report must not be used by the client to claim product certification, approval, or endorsement by NVLAP, NIST or any agency of the federal government. Non-friable organically bound materials present a problem matrix and therefore EMSL recommends gravimetric reduction prior to analysis. Samples received in good condition unless otherwise noted. Estimated accuracy, precision and uncertainty data available upon request. Unless requested by the client, building materials manufactured with multiple layers (i.e. linoleum, wallboard, etc.) are reported as a single sample. Reporting limit is 1%  
 Samples analyzed by LA Testing Garden Grove, CA NVLAP Lab Code 101384-0, CA ELAP 1406

Initial report from 08/27/2012 15:51:49



# LA Testing

11652 Knott Street Unit F5, Garden Grove, CA 92841

Phone/Fax: (714) 828-4999 / (714) 828-4944

[losalamitoslab@latesting.com](mailto:losalamitoslab@latesting.com)

LA Testing Order:	331212146
CustomerID:	32PRSV78
CustomerPO:	
ProjectID:	The Wieland-Davco

Attn: **Greg Archung**  
**PSI - Professional Services, Inc.**  
**6330 Gateway Drive**  
**Suite B**  
**Cypress, CA 90630**

Phone: (714) 484-8600  
 Fax:  
 Received: 08/21/12 8:20 AM  
 Analysis Date: 8/27/2012  
 Collected: 8/16/2012

Project: 0588483-1 / The Wieland-Davco Corp / Christian Science First Church / 3303 Via Lido Newport Beach CA

## Test Report: Asbestos Analysis of Bulk Materials via EPA 600/R-93/116 and/or EPA 600/M4-82-020 Method(s) using Polarized Light Microscopy

Sample	Description	Appearance	Non-Asbestos		Asbestos
			% Fibrous	% Non-Fibrous	% Type
6-CS-21 331212146-0021	Blown Insulation Mineral Wool / Crawlspace / Middl	Gray Fibrous Homogeneous	90% Min. Wool	10% Non-fibrous (other)	None Detected
6-CS-22 331212146-0022	Blown Insulation Mineral Wool / Crawlspace / SW	Gray Fibrous Homogeneous	90% Min. Wool	10% Non-fibrous (other)	None Detected
7-CS-23 331212146-0023	Paper Abv Ceiling / Crawlspace / Aud Southeast	Tan Fibrous Homogeneous	95% Cellulose	5% Non-fibrous (other)	None Detected
7-CS-24 331212146-0024	Paper Abv Ceiling / Crawlspace / Aud Southwest	Tan Fibrous Heterogeneous	95% Cellulose	5% Non-fibrous (other)	None Detected
7-CS-25 331212146-0025	Paper Abv Ceiling / Crawlspace / Aud Northwest	Tan Fibrous Homogeneous	90% Cellulose	10% Non-fibrous (other)	None Detected
8-CS-26 331212146-0026	Air Cell Debris / Crawlspace / Aud Southeast	Grayish Fibrous Homogeneous	50% Cellulose	20% Non-fibrous (other)	30% Chrysotile
8-CS-27 331212146-0027	Air Cell Debris / Crawlspace / Aud Southwest				Stop Positive (Not Analyzed)
9-CS-28 331212146-0028	Vapor Barrier / Throughout / Ceiling Space	Black Fibrous Homogeneous	25% Cellulose	75% Non-fibrous (other)	None Detected

Analyst(s)

Christopher Kim (33)

Krystyn Gonzales (29)

Jeffrey Deboo (36)

Derrick Tanner, Laboratory Manager  
or other approved signatory

EMSL maintains liability limited to cost of analysis. This report relates only to the samples reported and may not be reproduced, except in full, without written approval by EMSL. EMSL bears no responsibility for sample collection activities or analytical method limitations. Interpretation and use of test results are the responsibility of the client. This report must not be used by the client to claim product certification, approval, or endorsement by NVLAP, NIST or any agency of the federal government. Non-friable organically bound materials present a problem matrix and therefore EMSL recommends gravimetric reduction prior to analysis. Samples received in good condition unless otherwise noted. Estimated accuracy, precision and uncertainty data available upon request. Unless requested by the client, building materials manufactured with multiple layers (i.e. linoleum, wallboard, etc.) are reported as a single sample. Reporting limit is 1%  
 Samples analyzed by LA Testing Garden Grove, CA NVLAP Lab Code 101384-0, CA ELAP 1406

Initial report from 08/27/2012 15:51:49



# LA Testing

11652 Knott Street Unit F5, Garden Grove, CA 92841

Phone/Fax: (714) 828-4999 / (714) 828-4944

[losalamitoslab@latesting.com](mailto:losalamitoslab@latesting.com)

LA Testing Order:	331212146
CustomerID:	32PRSV78
CustomerPO:	
ProjectID:	The Wieland-Davco

Attn: **Greg Archung**  
**PSI - Professional Services, Inc.**  
**6330 Gateway Drive**  
**Suite B**  
**Cypress, CA 90630**

Phone: (714) 484-8600  
 Fax:  
 Received: 08/21/12 8:20 AM  
 Analysis Date: 8/27/2012  
 Collected: 8/16/2012

Project: 0588483-1 / The Wieland-Davco Corp / Christian Science First Church / 3303 Via Lido Newport Beach CA

## Test Report: Asbestos Analysis of Bulk Materials via EPA 600/R-93/116 and/or EPA 600/M4-82-020 Method(s) using Polarized Light Microscopy

Sample	Description	Appearance	Non-Asbestos		Asbestos
			% Fibrous	% Non-Fibrous	% Type
9-CS-29 331212146-0029	Vapor Barrier / Throughout / Hall	Black Fibrous Homogeneous	25% Cellulose	75% Non-fibrous (other)	None Detected
9-CS-30 331212146-0030	Vapor Barrier / Throughout / Closet	Black Fibrous Homogeneous	25% Cellulose	75% Non-fibrous (other)	None Detected
10-CS-31-Floor Tile 331212146-0031	9" Wht FT-Mastic / Loft Room / North	White Non-Fibrous Homogeneous		97% Non-fibrous (other)	3% Chrysotile
10-CS-31-Mastic 331212146-0031A	9" Wht FT-Mastic / Loft Room / North	Black Non-Fibrous Homogeneous		95% Non-fibrous (other)	5% Chrysotile
10-CS-32 331212146-0032	9" Wht FT-Mastic / Loft Room / West				Stop Positive (Not Analyzed)
11-CS-33 331212146-0033	1x1 Ceiling Tile / Throughout / Aud Southwest	Grayish Fibrous Homogeneous	15% Cellulose 50% Glass	35% Non-fibrous (other)	None Detected
11-CS-34 331212146-0034	1x1 Ceiling Tile / Throughout / Hallway	Grayish Fibrous Homogeneous	10% Cellulose 50% Min. Wool	40% Non-fibrous (other)	None Detected
11-CS-35 331212146-0035	1x1 Ceiling Tile / Throughout / Custodian Closet	Gray Fibrous Homogeneous	20% Cellulose 50% Min. Wool	30% Non-fibrous (other)	None Detected

### Analyst(s)

Christopher Kim (33)

Krystyn Gonzales (29)

Jeffrey Deboo (36)

Derrick Tanner, Laboratory Manager  
or other approved signatory

EMSL maintains liability limited to cost of analysis. This report relates only to the samples reported and may not be reproduced, except in full, without written approval by EMSL. EMSL bears no responsibility for sample collection activities or analytical method limitations. Interpretation and use of test results are the responsibility of the client. This report must not be used by the client to claim product certification, approval, or endorsement by NVLAP, NIST or any agency of the federal government. Non-friable organically bound materials present a problem matrix and therefore EMSL recommends gravimetric reduction prior to analysis. Samples received in good condition unless otherwise noted. Estimated accuracy, precision and uncertainty data available upon request. Unless requested by the client, building materials manufactured with multiple layers (i.e. linoleum, wallboard, etc.) are reported as a single sample. Reporting limit is 1%  
 Samples analyzed by LA Testing Garden Grove, CA NVLAP Lab Code 101384-0, CA ELAP 1406

Initial report from 08/27/2012 15:51:49



# LA Testing

11652 Knott Street Unit F5, Garden Grove, CA 92841

Phone/Fax: (714) 828-4999 / (714) 828-4944

[losalamitoslab@latesting.com](mailto:losalamitoslab@latesting.com)

LA Testing Order:	331212146
CustomerID:	32PRSV78
CustomerPO:	
ProjectID:	The Wieland-Davco

Attn: **Greg Archung**  
**PSI - Professional Services, Inc.**  
**6330 Gateway Drive**  
**Suite B**  
**Cypress, CA 90630**

Phone: (714) 484-8600  
 Fax:  
 Received: 08/21/12 8:20 AM  
 Analysis Date: 8/27/2012  
 Collected: 8/16/2012

Project: 0588483-1 / The Wieland-Davco Corp / Christian Science First Church / 3303 Via Lido Newport Beach CA

## Test Report: Asbestos Analysis of Bulk Materials via EPA 600/R-93/116 and/or EPA 600/M4-82-020 Method(s) using Polarized Light Microscopy

Sample	Description	Appearance	Non-Asbestos		Asbestos
			% Fibrous	% Non-Fibrous	% Type
12-CS-36-Mastic 331212146-0036	Brown Base Cove Glue / Throughout / Sunday School	Brown Non-Fibrous Homogeneous		100% Non-fibrous (other)	<1% Chrysotile
12-CS-36-Plaster 331212146-0036A	Brown Base Cove Glue / Throughout / Sunday School	White Non-Fibrous Homogeneous		100% Non-fibrous (other)	None Detected
12-CS-37-Mastic 331212146-0037	Brown Base Cove Glue / Throughout / Sunday School	Brown Non-Fibrous Homogeneous		100% Non-fibrous (other)	<1% Chrysotile
12-CS-37-Plaster 331212146-0037A	Brown Base Cove Glue / Throughout / Sunday School	White Non-Fibrous Homogeneous		100% Non-fibrous (other)	None Detected
12-CS-38-Mastic 331212146-0038	Brown Base Cove Glue / Throughout / Aud	Brown Non-Fibrous Homogeneous		100% Non-fibrous (other)	<1% Chrysotile
12-CS-38-Plaster 331212146-0038A	Brown Base Cove Glue / Throughout / Aud	White Non-Fibrous Homogeneous		100% Non-fibrous (other)	None Detected
13-CS-39 331212146-0039	Mudded Joint / Ceiling Crawlspace / NW Utility Roo	Beige Fibrous Homogeneous	20% Min. Wool	65% Non-fibrous (other)	15% Chrysotile
14-CS-40-Sheet Flooring 331212146-0040	Wht SF-Mastic-FT- Mastic / Floral Room / North	White/Grayish Fibrous Heterogeneous	10% Cellulose 5% Glass	85% Non-fibrous (other)	None Detected

### Analyst(s)

Christopher Kim (33)

Krystyn Gonzales (29)

Jeffrey Deboo (36)

Derrick Tanner, Laboratory Manager  
or other approved signatory

EMSL maintains liability limited to cost of analysis. This report relates only to the samples reported and may not be reproduced, except in full, without written approval by EMSL. EMSL bears no responsibility for sample collection activities or analytical method limitations. Interpretation and use of test results are the responsibility of the client. This report must not be used by the client to obtain product certification, approval, or endorsement by NVLAP, NIST or any agency of the federal government. Non-friable organically bound materials present a problem matrix and therefore EMSL recommends gravimetric reduction prior to analysis. Samples received in good condition unless otherwise noted. Estimated accuracy, precision and uncertainty data available upon request. Unless requested by the client, building materials manufactured with multiple layers (i.e. linoleum, wallboard, etc.) are reported as a single sample. Reporting limit is 1%  
 Samples analyzed by LA Testing Garden Grove, CA NVLAP Lab Code 101384-0, CA ELAP 1406

Initial report from 08/27/2012 15:51:49



# LA Testing

11652 Knott Street Unit F5, Garden Grove, CA 92841

Phone/Fax: (714) 828-4999 / (714) 828-4944

[losalamitoslab@latesting.com](mailto:losalamitoslab@latesting.com)

LA Testing Order:	331212146
CustomerID:	32PRSV78
CustomerPO:	
ProjectID:	The Wieland-Davco

Attn: **Greg Archung**  
**PSI - Professional Services, Inc.**  
**6330 Gateway Drive**  
**Suite B**  
**Cypress, CA 90630**

Phone: (714) 484-8600  
 Fax:  
 Received: 08/21/12 8:20 AM  
 Analysis Date: 8/27/2012  
 Collected: 8/16/2012

Project: 0588483-1 / The Wieland-Davco Corp / Christian Science First Church / 3303 Via Lido Newport Beach CA

## Test Report: Asbestos Analysis of Bulk Materials via EPA 600/R-93/116 and/or EPA 600/M4-82-020 Method(s) using Polarized Light Microscopy

Sample	Description	Appearance	Non-Asbestos		Asbestos
			% Fibrous	% Non-Fibrous	% Type
14-CS-40-Mastic 331212146-0040A	Wht SF-Mastic-FT-Mastic / Floral Room / North	Tan Non-Fibrous Homogeneous		100% Non-fibrous (other)	None Detected
14-CS-40-Floor Tile 331212146-0040B	Wht SF-Mastic-FT-Mastic / Floral Room / North	Beige Non-Fibrous Homogeneous		98% Non-fibrous (other)	2% Chrysotile
14-CS-40-Mastic 331212146-0040C	Wht SF-Mastic-FT-Mastic / Floral Room / North	Black Non-Fibrous Homogeneous		98% Non-fibrous (other)	2% Chrysotile
14-CS-41-Sheet Flooring 331212146-0041	Wht SF-Mastic-FT-Mastic / Floral Room / East	White/Grayish Fibrous Heterogeneous	10% Cellulose	90% Non-fibrous (other)	None Detected
14-CS-41-Mastic 331212146-0041A	Wht SF-Mastic-FT-Mastic / Floral Room / East				Insufficient Material
14-CS-41-Floor Tile 331212146-0041B	Wht SF-Mastic-FT-Mastic / Floral Room / East				Stop Positive (Not Analyzed)
14-CS-41-Mastic 331212146-0041C	Wht SF-Mastic-FT-Mastic / Floral Room / East				Stop Positive (Not Analyzed)
15-CS-42-Floor Tile 331212146-0042	12" FT-Blk Mastic / SW Bathroom	Beige Non-Fibrous Homogeneous		97% Non-fibrous (other)	3% Chrysotile

### Analyst(s)

Christopher Kim (33)

Krystyn Gonzales (29)

Jeffrey Deboo (36)

Derrick Tanner, Laboratory Manager  
or other approved signatory

EMSL maintains liability limited to cost of analysis. This report relates only to the samples reported and may not be reproduced, except in full, without written approval by EMSL. EMSL bears no responsibility for sample collection activities or analytical method limitations. Interpretation and use of test results are the responsibility of the client. This report must not be used by the client to obtain product certification, approval, or endorsement by NVLAP, NIST or any agency of the federal government. Non-friable organically bound materials present a problem matrix and therefore EMSL recommends gravimetric reduction prior to analysis. Samples received in good condition unless otherwise noted. Estimated accuracy, precision and uncertainty data available upon request. Unless requested by the client, building materials manufactured with multiple layers (i.e. linoleum, wallboard, etc.) are reported as a single sample. Reporting limit is 1%  
 Samples analyzed by LA Testing Garden Grove, CA NVLAP Lab Code 101384-0, CA ELAP 1406

Initial report from 08/27/2012 15:51:49



# LA Testing

11652 Knott Street Unit F5, Garden Grove, CA 92841

Phone/Fax: (714) 828-4999 / (714) 828-4944

[losalamitoslab@latesting.com](mailto:losalamitoslab@latesting.com)

LA Testing Order:	331212146
CustomerID:	32PRSV78
CustomerPO:	
ProjectID:	The Wieland-Davco

Attn: **Greg Archung**  
**PSI - Professional Services, Inc.**  
**6330 Gateway Drive**  
**Suite B**  
**Cypress, CA 90630**

Phone: (714) 484-8600  
 Fax:  
 Received: 08/21/12 8:20 AM  
 Analysis Date: 8/27/2012  
 Collected: 8/16/2012

Project: 0588483-1 / The Wieland-Davco Corp / Christian Science First Church / 3303 Via Lido Newport Beach CA

## Test Report: Asbestos Analysis of Bulk Materials via EPA 600/R-93/116 and/or EPA 600/M4-82-020 Method(s) using Polarized Light Microscopy

Sample	Description	Appearance	Non-Asbestos		Asbestos
			% Fibrous	% Non-Fibrous	% Type
15-CS-42-Mastic 331212146-0042A	12" FT-Blk Mastic / SW Bathroom	Black Non-Fibrous Homogeneous		93% Non-fibrous (other)	7% Chrysotile
15-CS-43 331212146-0043	12" FT-Blk Mastic / Teller Room				Stop Positive (Not Analyzed)
16-CS-44-Sheet Flooring 331212146-0044	Beige SF-Mastic / Child Care Bathroom	Beige Fibrous Heterogeneous	10% Cellulose	90% Non-fibrous (other)	None Detected
16-CS-44-Mastic 331212146-0044A	Beige SF-Mastic / Child Care Bathroom	Black Non-Fibrous Homogeneous		95% Non-fibrous (other)	5% Chrysotile
16-CS-45-Sheet Flooring 331212146-0045	Beige SF-Mastic / Child Care Bathroom	Beige Fibrous Heterogeneous	12% Cellulose	88% Non-fibrous (other)	None Detected
16-CS-45-Mastic 331212146-0045A	Beige SF-Mastic / Child Care Bathroom				Stop Positive (Not Analyzed)
17-CS-46-Float 331212146-0046	Float-Blk Mastic / Sunday School SW Corner	Beige Non-Fibrous Homogeneous	25% Cellulose	75% Non-fibrous (other)	None Detected
17-CS-46-Mastic 331212146-0046A	Float-Blk Mastic / Sunday School SW Corner	Black Non-Fibrous Homogeneous		100% Non-fibrous (other)	None Detected

### Analyst(s)

Christopher Kim (33)

Krystyn Gonzales (29)

Jeffrey Deboo (36)

Derrick Tanner, Laboratory Manager  
or other approved signatory

EMSL maintains liability limited to cost of analysis. This report relates only to the samples reported and may not be reproduced, except in full, without written approval by EMSL. EMSL bears no responsibility for sample collection activities or analytical method limitations. Interpretation and use of test results are the responsibility of the client. This report must not be used by the client to obtain product certification, approval, or endorsement by NVLAP, NIST or any agency of the federal government. Non-friable organically bound materials present a problem matrix and therefore EMSL recommends gravimetric reduction prior to analysis. Samples received in good condition unless otherwise noted. Estimated accuracy, precision and uncertainty data available upon request. Unless requested by the client, building materials manufactured with multiple layers (i.e. linoleum, wallboard, etc.) are reported as a single sample. Reporting limit is 1%  
 Samples analyzed by LA Testing Garden Grove, CA NVLAP Lab Code 101384-0, CA ELAP 1406

Initial report from 08/27/2012 15:51:49



# LA Testing

11652 Knott Street Unit F5, Garden Grove, CA 92841

Phone/Fax: (714) 828-4999 / (714) 828-4944

[losalamitoslab@latesting.com](mailto:losalamitoslab@latesting.com)

LA Testing Order:	331212146
CustomerID:	32PRSV78
CustomerPO:	
ProjectID:	The Wieland-Davco

Attn: **Greg Archung**  
**PSI - Professional Services, Inc.**  
**6330 Gateway Drive**  
**Suite B**  
**Cypress, CA 90630**

Phone: (714) 484-8600  
 Fax:  
 Received: 08/21/12 8:20 AM  
 Analysis Date: 8/27/2012  
 Collected: 8/16/2012

Project: 0588483-1 / The Wieland-Davco Corp / Christian Science First Church / 3303 Via Lido Newport Beach CA

## Test Report: Asbestos Analysis of Bulk Materials via EPA 600/R-93/116 and/or EPA 600/M4-82-020 Method(s) using Polarized Light Microscopy

Sample	Description	Appearance	Non-Asbestos		Asbestos
			% Fibrous	% Non-Fibrous	% Type
18-CS-47 331212146-0047	Brown Mastic / Aud SE Entry to Stage Area	Brown Non-Fibrous Homogeneous		94% Non-fibrous (other)	6% Chrysotile
19-CS-48 331212146-0048	Acoustic Ceiling Plaster / Committee Room	White Non-Fibrous Homogeneous		98% Non-fibrous (other)	2% Chrysotile
19-CS-49 331212146-0049	Acoustic Ceiling Plaster / Committee Room				Stop Positive (Not Analyzed)
19-CS-50 331212146-0050	Acoustic Ceiling Plaster / Committee Room				Stop Positive (Not Analyzed)
20-CS-51-Finish Coat 331212146-0051	Wall Plaster / RR Bldg / Committee Rm	White Non-Fibrous Homogeneous		100% Non-fibrous (other)	None Detected
20-CS-51-Base Coat 331212146-0051A	Wall Plaster / RR Bldg / Committee Rm	Grayish Non-Fibrous Homogeneous		100% Non-fibrous (other)	None Detected
20-CS-52-Base Coat 331212146-0052	Wall Plaster / RR Bldg / Floral	Grayish Non-Fibrous Homogeneous		100% Non-fibrous (other)	None Detected

Insufficient finish coat

### Analyst(s)

Christopher Kim (33)

Krystyn Gonzales (29)

Jeffrey Deboo (36)

Derrick Tanner, Laboratory Manager  
or other approved signatory

EMSL maintains liability limited to cost of analysis. This report relates only to the samples reported and may not be reproduced, except in full, without written approval by EMSL. EMSL bears no responsibility for sample collection activities or analytical method limitations. Interpretation and use of test results are the responsibility of the client. This report must not be used by the client to claim product certification, approval, or endorsement by NVLAP, NIST or any agency of the federal government. Non-friable organically bound materials present a problem matrix and therefore EMSL recommends gravimetric reduction prior to analysis. Samples received in good condition unless otherwise noted. Estimated accuracy, precision and uncertainty data available upon request. Unless requested by the client, building materials manufactured with multiple layers (i.e. linoleum, wallboard, etc.) are reported as a single sample. Reporting limit is 1%  
 Samples analyzed by LA Testing Garden Grove, CA NVLAP Lab Code 101384-0, CA ELAP 1406

Initial report from 08/27/2012 15:51:49



# LA Testing

11652 Knott Street Unit F5, Garden Grove, CA 92841

Phone/Fax: (714) 828-4999 / (714) 828-4944

[losalamitoslab@latesting.com](mailto:losalamitoslab@latesting.com)

LA Testing Order:	331212146
CustomerID:	32PRSV78
CustomerPO:	
ProjectID:	The Wieland-Davco

Attn: **Greg Archung**  
**PSI - Professional Services, Inc.**  
**6330 Gateway Drive**  
**Suite B**  
**Cypress, CA 90630**

Phone: (714) 484-8600  
 Fax:  
 Received: 08/21/12 8:20 AM  
 Analysis Date: 8/27/2012  
 Collected: 8/16/2012

Project: 0588483-1 / The Wieland-Davco Corp / Christian Science First Church / 3303 Via Lido Newport Beach CA

## Test Report: Asbestos Analysis of Bulk Materials via EPA 600/R-93/116 and/or EPA 600/M4-82-020 Method(s) using Polarized Light Microscopy

Sample	Description	Appearance	Non-Asbestos		Asbestos
			% Fibrous	% Non-Fibrous	% Type
20-CS-53-Finish Coat 331212146-0053	Wall Plaster / RR Bldg / Study Rm	White Non-Fibrous Homogeneous		100% Non-fibrous (other)	None Detected
20-CS-53-Base Coat 331212146-0053A	Wall Plaster / RR Bldg / Study Rm	Grayish Non-Fibrous Homogeneous		100% Non-fibrous (other)	None Detected
20-CS-54-Finish Coat 331212146-0054	Wall Plaster / RR Bldg / Men's	White Non-Fibrous Homogeneous		100% Non-fibrous (other)	None Detected
20-CS-54-Base Coat 331212146-0054A	Wall Plaster / RR Bldg / Men's	Beige Non-Fibrous Homogeneous		100% Non-fibrous (other)	None Detected
20-CS-55-Finish Coat 331212146-0055	Wall Plaster / RR Bldg / Women's	White Non-Fibrous Homogeneous		100% Non-fibrous (other)	None Detected
20-CS-55-Base Coat 331212146-0055A	Wall Plaster / RR Bldg / Women's	Beige Non-Fibrous Homogeneous		100% Non-fibrous (other)	None Detected
21-CS-56 331212146-0056	Blown in Insulation / RR Bldg Ceil Space / Hallway	Grayish Fibrous Homogeneous	90% Min. Wool	10% Non-fibrous (other)	None Detected

Analyst(s)

Christopher Kim (33)  
Jeffrey Deboo (36)

Krystyn Gonzales (29)

Derrick Tanner, Laboratory Manager  
or other approved signatory

EMSL maintains liability limited to cost of analysis. This report relates only to the samples reported and may not be reproduced, except in full, without written approval by EMSL. EMSL bears no responsibility for sample collection activities or analytical method limitations. Interpretation and use of test results are the responsibility of the client. This report must not be used by the client to claim product certification, approval, or endorsement by NVLAP, NIST or any agency of the federal government. Non-friable organically bound materials present a problem matrix and therefore EMSL recommends gravimetric reduction prior to analysis. Samples received in good condition unless otherwise noted. Estimated accuracy, precision and uncertainty data available upon request. Unless requested by the client, building materials manufactured with multiple layers (i.e. linoleum, wallboard, etc.) are reported as a single sample. Reporting limit is 1%  
 Samples analyzed by LA Testing Garden Grove, CA NVLAP Lab Code 101384-0, CA ELAP 1406

Initial report from 08/27/2012 15:51:49





# LA Testing

11652 Knott Street Unit F5, Garden Grove, CA 92841

Phone/Fax: (714) 828-4999 / (714) 828-4944

[losalamitoslab@latesting.com](mailto:losalamitoslab@latesting.com)

LA Testing Order:	331212146
CustomerID:	32PRSV78
CustomerPO:	
ProjectID:	The Wieland-Davco

Attn: **Greg Archung**  
**PSI - Professional Services, Inc.**  
**6330 Gateway Drive**  
**Suite B**  
**Cypress, CA 90630**

Phone: (714) 484-8600  
 Fax:  
 Received: 08/21/12 8:20 AM  
 Analysis Date: 8/27/2012  
 Collected: 8/16/2012

Project: 0588483-1 / The Wieland-Davco Corp / Christian Science First Church / 3303 Via Lido Newport Beach CA

## Test Report: Asbestos Analysis of Bulk Materials via EPA 600/R-93/116 and/or EPA 600/M4-82-020 Method(s) using Polarized Light Microscopy

Sample	Description	Appearance	Non-Asbestos		Asbestos
			% Fibrous	% Non-Fibrous	% Type
21-CS-57 331212146-0057	Blown in Insulation / RR Bldg Ceil Space / Hallway	Black/Grayish Fibrous Homogeneous	90% Min. Wool	10% Non-fibrous (other)	None Detected
21-CS-58 331212146-0058	Blown in Insulation / RR Bldg Ceil Space / Hallway	Grayish Fibrous Homogeneous	90% Min. Wool	10% Non-fibrous (other)	None Detected
22-CS-59 331212146-0059	Roof Debris / RR Bldg Ceil Space / Hallway Access	Black Non-Fibrous Heterogeneous	<1% Cellulose <1% Glass	100% Non-fibrous (other)	None Detected
22-CS-60 331212146-0060	Roof Debris / RR Bldg Ceil Space / Hallway Access	Black Non-Fibrous Heterogeneous		100% Non-fibrous (other)	<1% Chrysotile
22-CS-61 331212146-0061	Roof Debris / RR Bldg Ceil Space / Hallway Access	Black Non-Fibrous Homogeneous	2% Glass	98% Non-fibrous (other)	None Detected

Analyst(s) \_\_\_\_\_

Christopher Kim (33)

Krystyn Gonzales (29)

Jeffrey Deboo (36)

Derrick Tanner, Laboratory Manager  
or other approved signatory

EMSL maintains liability limited to cost of analysis. This report relates only to the samples reported and may not be reproduced, except in full, without written approval by EMSL. EMSL bears no responsibility for sample collection activities or analytical method limitations. Interpretation and use of test results are the responsibility of the client. This report must not be used by the client to claim product certification, approval, or endorsement by NVLAP, NIST or any agency of the federal government. Non-friable organically bound materials present a problem matrix and therefore EMSL recommends gravimetric reduction prior to analysis. Samples received in good condition unless otherwise noted. Estimated accuracy, precision and uncertainty data available upon request. Unless requested by the client, building materials manufactured with multiple layers (i.e. linoleum, wallboard, etc.) are reported as a single sample. Reporting limit is 1%  
 Samples analyzed by LA Testing Garden Grove, CA NVLAP Lab Code 101384-0, CA ELAP 1406

Initial report from 08/27/2012 15:51:49



# LA Testing

11652 Knott Street Unit F5, Garden Grove, CA 92841

Phone/Fax: (714) 828-4999 / (714) 828-4944

[losalamitoslab@latesting.com](mailto:losalamitoslab@latesting.com)

LA Testing Order:	331212223
CustomerID:	32PRSV78
CustomerPO:	
ProjectID:	The Wieland-Davco

Attn: **Greg Archung**  
**PSI - Professional Services, Inc.**  
**6330 Gateway Drive**  
**Suite B**  
**Cypress, CA 90630**

Phone: (714) 484-8600  
 Fax:  
 Received: 08/22/12 1:10 PM  
 Analysis Date: 8/29/2012  
 Collected:

Project: 0588483-1 / The Wieland-Davco Corp / Christian Science First Church

## Test Report: Asbestos Analysis of Bulk Materials via EPA 600/R-93/116 and/or EPA 600/M4-82-020 Method(s) using Polarized Light Microscopy

Sample	Description	Appearance	Non-Asbestos		Asbestos
			% Fibrous	% Non-Fibrous	% Type
23-CS-62 331212223-0001	Roof Core/RR Roof-S	Black Fibrous Homogeneous	20% Glass	80% Non-fibrous (other)	None Detected
23-CS-63 331212223-0002	Roof Core/RR Roof-Middle	Black Fibrous Homogeneous	20% Glass	80% Non-fibrous (other)	None Detected
23-CS-64 331212223-0003	Roof Core/RR Roof-N	Black Fibrous Homogeneous	15% Glass	85% Non-fibrous (other)	None Detected
24-CS-65 331212223-0004	Roof Flashing Core/RR Roof-S	White/Black Fibrous Heterogeneous	25% Glass	75% Non-fibrous (other)	None Detected
24-CS-66-Shingle 1 331212223-0005	Roof Flashing Core/RR Roof-W	White/Black Fibrous Heterogeneous	20% Glass	80% Non-fibrous (other)	None Detected
24-CS-66-Felt 331212223-0005A	Roof Flashing Core/RR Roof-W	Black Fibrous Homogeneous		90% Non-fibrous (other)	10% Chrysotile
24-CS-67-Shingle 331212223-0006	Roof Flashing Core/RR Roof-NE	White/Black Fibrous Heterogeneous	15% Glass	85% Non-fibrous (other)	None Detected
24-CS-67-Felt 331212223-0006A	Roof Flashing Core/RR Roof-NE	Black Fibrous Homogeneous	15% Glass	85% Non-fibrous (other)	None Detected

Analyst(s)

Christopher Kim (10)  
 Krystyn Gonzales (21)

Derrick Tanner, Laboratory Manager  
 or other approved signatory

EMSL maintains liability limited to cost of analysis. This report relates only to the samples reported and may not be reproduced, except in full, without written approval by EMSL. EMSL bears no responsibility for sample collection activities or analytical method limitations. Interpretation and use of test results are the responsibility of the client. This report must not be used by the client to claim product certification, approval, or endorsement by NVLAP, NIST or any agency of the federal government. Non-friable organically bound materials present a problem matrix and therefore EMSL recommends gravimetric reduction prior to analysis. Samples received in good condition unless otherwise noted. Estimated accuracy, precision and uncertainty data available upon request. Unless requested by the client, building materials manufactured with multiple layers (i.e. linoleum, wallboard, etc.) are reported as a single sample. Reporting limit is 1%  
 Samples analyzed by LA Testing Garden Grove, CA NVLAP Lab Code 101384-0, CA ELAP 1406

Initial report from 08/29/2012 11:21:44



# LA Testing

11652 Knott Street Unit F5, Garden Grove, CA 92841

Phone/Fax: (714) 828-4999 / (714) 828-4944

[losalamitoslab@latesting.com](mailto:losalamitoslab@latesting.com)

LA Testing Order:	331212223
CustomerID:	32PRSV78
CustomerPO:	
ProjectID:	The Wieland-Davco

Attn: **Greg Archung**  
**PSI - Professional Services, Inc.**  
**6330 Gateway Drive**  
**Suite B**  
**Cypress, CA 90630**

Phone: (714) 484-8600  
 Fax:  
 Received: 08/22/12 1:10 PM  
 Analysis Date: 8/29/2012  
 Collected:

Project: 0588483-1 / The Wieland-Davco Corp / Christian Science First Church

## Test Report: Asbestos Analysis of Bulk Materials via EPA 600/R-93/116 and/or EPA 600/M4-82-020 Method(s) using Polarized Light Microscopy

Sample	Description	Appearance	Non-Asbestos		Asbestos
			% Fibrous	% Non-Fibrous	% Type
25-CS-68 331212223-0007	Roof Mastic/RR Roof Vents/Seams- NE Flashing Seam	Gray/Black Non-Fibrous Homogeneous		94% Non-fibrous (other)	6% Chrysotile
25-CS-69 331212223-0008	Roof Mastic/RR Roof Vents/Seams- Middle HVAC Pad	Gray/Black Non-Fibrous Homogeneous		94% Non-fibrous (other)	6% Chrysotile
25-CS-70 331212223-0009	Roof Mastic/RR Roof Vents/Seams- SE Vent Pipe	Black/Silver Fibrous Homogeneous		93% Non-fibrous (other)	7% Chrysotile
26-CS-71-Finish Coat 331212223-0010	Ext. Plaster/RR Throughout-SE	White Non-Fibrous Homogeneous		100% Non-fibrous (other)	None Detected
26-CS-71-Base Coat 331212223-0010A	Ext. Plaster/RR Throughout-SE	Gray Non-Fibrous Homogeneous		100% Non-fibrous (other)	None Detected
26-CS-72-Finish Coat 331212223-0011	Ext. Plaster/RR Throughout-E	White Non-Fibrous Homogeneous		100% Non-fibrous (other)	None Detected
26-CS-72-Base Coat 1 331212223-0011A	Ext. Plaster/RR Throughout-E	Beige Non-Fibrous Homogeneous		100% Non-fibrous (other)	<1% Chrysotile

Analyst(s)

*Christopher Kim (10)*  
*Krystyn Gonzales (21)*

Derrick Tanner, Laboratory Manager  
 or other approved signatory

EMSL maintains liability limited to cost of analysis. This report relates only to the samples reported and may not be reproduced, except in full, without written approval by EMSL. EMSL bears no responsibility for sample collection activities or analytical method limitations. Interpretation and use of test results are the responsibility of the client. This report must not be used by the client to obtain product certification, approval, or endorsement by NVLAP, NIST or any agency of the federal government. Non-friable organically bound materials present a problem matrix and therefore EMSL recommends gravimetric reduction prior to analysis. Samples received in good condition unless otherwise noted. Estimated accuracy, precision and uncertainty data available upon request. Unless requested by the client, building materials manufactured with multiple layers (i.e. linoleum, wallboard, etc.) are reported as a single sample. Reporting limit is 1%  
 Samples analyzed by LA Testing Garden Grove, CA NVLAP Lab Code 101384-0, CA ELAP 1406

Initial report from 08/29/2012 11:21:44



# LA Testing

11652 Knott Street Unit F5, Garden Grove, CA 92841

Phone/Fax: (714) 828-4999 / (714) 828-4944

[losalamitoslab@latesting.com](mailto:losalamitoslab@latesting.com)

LA Testing Order:	331212223
CustomerID:	32PRSV78
CustomerPO:	
ProjectID:	The Wieland-Davco

Attn: **Greg Archung**  
**PSI - Professional Services, Inc.**  
**6330 Gateway Drive**  
**Suite B**  
**Cypress, CA 90630**

Phone: (714) 484-8600  
 Fax:  
 Received: 08/22/12 1:10 PM  
 Analysis Date: 8/29/2012  
 Collected:

Project: 0588483-1 / The Wieland-Davco Corp / Christian Science First Church

## Test Report: Asbestos Analysis of Bulk Materials via EPA 600/R-93/116 and/or EPA 600/M4-82-020 Method(s) using Polarized Light Microscopy

Sample	Description	Appearance	Non-Asbestos		Asbestos
			% Fibrous	% Non-Fibrous	% Type
26-CS-72-Base Coat 2 331212223-0011B	Ext. Plaster/RR Throughout-E	Gray Non-Fibrous Homogeneous		100% Non-fibrous (other)	None Detected
26-CS-73-Finish Coat 331212223-0012	Ext. Plaster/RR Throughout-NE	White Non-Fibrous Homogeneous		100% Non-fibrous (other)	None Detected
26-CS-73-Base Coat 331212223-0012A	Ext. Plaster/RR Throughout-NE	Gray Non-Fibrous Homogeneous		100% Non-fibrous (other)	None Detected
27-CS-74 331212223-0013	Ext. Plaster/Throughout -E	Beige Non-Fibrous Homogeneous		100% Non-fibrous (other)	None Detected
27-CS-75-Finish Coat 331212223-0014	Ext. Plaster/Throughout -E	White Non-Fibrous Homogeneous		100% Non-fibrous (other)	None Detected
27-CS-75-Base Coat 331212223-0014A	Ext. Plaster/Throughout -E	Gray Non-Fibrous Homogeneous		100% Non-fibrous (other)	None Detected
27-CS-76-Finish Coat 331212223-0015	Ext. Plaster/Throughout -N	Beige Non-Fibrous Heterogeneous		100% Non-fibrous (other)	None Detected

Analyst(s)

Christopher Kim (10)  
Krystyn Gonzales (21)

Derrick Tanner, Laboratory Manager  
or other approved signatory

EMSL maintains liability limited to cost of analysis. This report relates only to the samples reported and may not be reproduced, except in full, without written approval by EMSL. EMSL bears no responsibility for sample collection activities or analytical method limitations. Interpretation and use of test results are the responsibility of the client. This report must not be used by the client to claim product certification, approval, or endorsement by NVLAP, NIST or any agency of the federal government. Non-friable organically bound materials present a problem matrix and therefore EMSL recommends gravimetric reduction prior to analysis. Samples received in good condition unless otherwise noted. Estimated accuracy, precision and uncertainty data available upon request. Unless requested by the client, building materials manufactured with multiple layers (i.e. linoleum, wallboard, etc.) are reported as a single sample. Reporting limit is 1%  
 Samples analyzed by LA Testing Garden Grove, CA NVLAP Lab Code 101384-0, CA ELAP 1406

Initial report from 08/29/2012 11:21:44



# LA Testing

11652 Knott Street Unit F5, Garden Grove, CA 92841

Phone/Fax: (714) 828-4999 / (714) 828-4944

[losalamitoslab@latesting.com](mailto:losalamitoslab@latesting.com)

LA Testing Order:	331212223
CustomerID:	32PRSV78
CustomerPO:	
ProjectID:	The Wieland-Davco

Attn: **Greg Archung**  
**PSI - Professional Services, Inc.**  
**6330 Gateway Drive**  
**Suite B**  
**Cypress, CA 90630**

Phone: (714) 484-8600  
 Fax:  
 Received: 08/22/12 1:10 PM  
 Analysis Date: 8/29/2012  
 Collected:

Project: 0588483-1 / The Wieland-Davco Corp / Christian Science First Church

## Test Report: Asbestos Analysis of Bulk Materials via EPA 600/R-93/116 and/or EPA 600/M4-82-020 Method(s) using Polarized Light Microscopy

Sample	Description	Appearance	Non-Asbestos		Asbestos
			% Fibrous	% Non-Fibrous	% Type
27-CS-76-Base Coat 331212223-0015A	Ext. Plaster/Throughout -N	Gray Non-Fibrous Homogeneous		100% Non-fibrous (other)	None Detected
27-CS-77 331212223-0016	Ext. Plaster/Throughout -SW	Beige Non-Fibrous Homogeneous		100% Non-fibrous (other)	None Detected
27-CS-78 331212223-0017	Ext. Plaster/Throughout -S	Beige Non-Fibrous Homogeneous		100% Non-fibrous (other)	None Detected
28-CS-79-Joint Compound 331212223-0018	DW/JC-Former Organ Motor Rm.-SE	Beige Non-Fibrous Homogeneous		98% Non-fibrous (other)	2% Chrysotile
28-CS-79-Drywall 331212223-0018A	DW/JC-Former Organ Motor Rm.-SE	Brown/White Fibrous Heterogeneous	12% Cellulose	88% Non-fibrous (other)	None Detected
28-CS-80-Joint Compound 331212223-0019	DW/JC-Former Organ Motor Rm.-NW	Beige Non-Fibrous Homogeneous		98% Non-fibrous (other)	2% Chrysotile
28-CS-80-Drywall 331212223-0019A	DW/JC-Former Organ Motor Rm.-NW	Brown/White Fibrous Heterogeneous	12% Cellulose	88% Non-fibrous (other)	None Detected

Analyst(s)

Christopher Kim (10)  
 Krystyn Gonzales (21)

Derrick Tanner, Laboratory Manager  
 or other approved signatory

EMSL maintains liability limited to cost of analysis. This report relates only to the samples reported and may not be reproduced, except in full, without written approval by EMSL. EMSL bears no responsibility for sample collection activities or analytical method limitations. Interpretation and use of test results are the responsibility of the client. This report must not be used by the client to claim product certification, approval, or endorsement by NVLAP, NIST or any agency of the federal government. Non-friable organically bound materials present a problem matrix and therefore EMSL recommends gravimetric reduction prior to analysis. Samples received in good condition unless otherwise noted. Estimated accuracy, precision and uncertainty data available upon request. Unless requested by the client, building materials manufactured with multiple layers (i.e. linoleum, wallboard, etc.) are reported as a single sample. Reporting limit is 1%  
 Samples analyzed by LA Testing Garden Grove, CA NVLAP Lab Code 101384-0, CA ELAP 1406

Initial report from 08/29/2012 11:21:44



# LA Testing

11652 Knott Street Unit F5, Garden Grove, CA 92841

Phone/Fax: (714) 828-4999 / (714) 828-4944

[losalamitoslab@latesting.com](mailto:losalamitoslab@latesting.com)

LA Testing Order:	331212223
CustomerID:	32PRSV78
CustomerPO:	
ProjectID:	The Wieland-Davco

Attn: **Greg Archung**  
**PSI - Professional Services, Inc.**  
**6330 Gateway Drive**  
**Suite B**  
**Cypress, CA 90630**

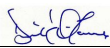
Phone: (714) 484-8600  
 Fax:  
 Received: 08/22/12 1:10 PM  
 Analysis Date: 8/29/2012  
 Collected:

Project: 0588483-1 / The Wieland-Davco Corp / Christian Science First Church

## Test Report: Asbestos Analysis of Bulk Materials via EPA 600/R-93/116 and/or EPA 600/M4-82-020 Method(s) using Polarized Light Microscopy

Sample	Description	Appearance	Non-Asbestos		Asbestos
			% Fibrous	% Non-Fibrous	% Type
28-CS-81-Joint Compound 331212223-0020	DW/JC-Former Organ Motor Rm.-NE	Beige Non-Fibrous  Homogeneous		98% Non-fibrous (other)	2% Chrysotile
28-CS-81-Drywall 331212223-0020A	DW/JC-Former Organ Motor Rm.-NE	Brown/White Fibrous Heterogeneous	10% Cellulose	90% Non-fibrous (other)	None Detected

Analyst(s)  
 \_\_\_\_\_  
 Christopher Kim (10)  
 Krystyn Gonzales (21)

  
 \_\_\_\_\_  
 Derrick Tanner, Laboratory Manager  
 or other approved signatory

EMSL maintains liability limited to cost of analysis. This report relates only to the samples reported and may not be reproduced, except in full, without written approval by EMSL. EMSL bears no responsibility for sample collection activities or analytical method limitations. Interpretation and use of test results are the responsibility of the client. This report must not be used by the client to claim product certification, approval, or endorsement by NVLAP, NIST or any agency of the federal government. Non-friable organically bound materials present a problem matrix and therefore EMSL recommends gravimetric reduction prior to analysis. Samples received in good condition unless otherwise noted. Estimated accuracy, precision and uncertainty data available upon request. Unless requested by the client, building materials manufactured with multiple layers (i.e. linoleum, wallboard, etc.) are reported as a single sample. Reporting limit is 1%  
 Samples analyzed by LA Testing Garden Grove, CA NVLAP Lab Code 101384-0, CA ELAP 1406

Initial report from 08/29/2012 11:21:44



# # 3 3 1 2 1 2 1 4<sup>6</sup> Field Sample & Material Log Asbestos Chain Of Custody

Page 1 of 5

Project Name (client): The Wieland-Davco Corp Project #: 0588483-1 Building/Branch/Store #: Christian Science First Church

Inspector: Greg Archung Sample Date: 8-16-12 Address: 3303 Via Lido Newport Beach, Ca

Relinquished By: Greg Archung (Print) [Signature] (Signature) 8-21-12 (Date)

Relinquished To: Divia Sala (Print) [Signature] (Signature) 8/21/12 (Date) 8:20AM (Date)

Group #	Sample Number	Material	Material Location	Sample Location	F/NF	Cond.	Qty.
1	CS-01	Roof Core 5 layers	Utility Roofs	Southeast	NF	G	1,500 SF
↓	CS-02	↓	↓	Middle	↓	↓	↓
↓	CS-03	↓	↓	Southwest	↓	↓	↓
2	CS-04	Roof Flashing	Utility Roofs	North	NF	G	1,200 SF
↓	CS-05	↓	↓	East	↓	↓	↓
↓	CS-06	↓	↓	South	↓	↓	↓
3	CS-07	Roof Mastic	Roof: Vents, Duct Seams, Roof Drains, Parapet Vents, etc	North Vent Pipe	NF	G	400 SF
↓	CS-08	↓	↓	South Duct	↓	↓	↓
↓	CS-09	↓	↓	Northeast Electrical Box	↓	↓	↓
4	CS-10	Roof Felt 3 Layers	Roof under Spanish Tiles	Southeast	NF	F	12,500 SF
↓	CS-11	↓	↓	South	↓	↓	↓
↓	CS-12	↓	↓	Southwest	↓	↓	↓

Send Analysis Results to the Attention of Greg Archung

Analyze To First Positive  Analyze All Samples  
Requested Turnaround Time:        Same Day        24-Hour        48-Hour        72-Hour        30 Days

# 3 3 1 2 1 2 1 4 6

Project Name (client): The Wieland-Davco Corp Project # 0588483-1 Building/Branch/Store #: Christian Science First Church

Address: 3303 Via Lido Newport Beach, Ca

Relinquished By: Greg A. [Signature] (Print) [Signature] (Signature) 8-21-12 (Date)

Relinquished To: Olivia Saha (Print) [Signature] (Signature) 8/21/12 8:20AM (Date)

Group #	Sample Number	Material	Material Location	Sample Location	F/NF	Cond.	Qty.
5	CS -13	Plaster Walls	Throughout	Floral	NF	G	14,000 sf
	CS -14			SS Super.			
	CS -15			Sunday School (SS)			
	CS -16			NE Auditorium			
	CS -17			SW Auditorium			
	CS -18			S Loft Area			
	CS -19			N Loft Area			
6	CS -20	Blown Insulation Mineral Wool	Ceiling Crawlspace	South	F	F	14,000 SF
	CS -21			Middle			
	CS -22			Southwest			
7	CS -23	Paper Above Ceiling Tiles	Ceiling Crawlspace	Aud. Southeast	F	F	14,000 SF
	CS-24			Aud. Southwest			
	CS-25			Aud. Northwest			



# 331212146

Page 3 of 5

Project Name (client): The Wieland-Davco Corp Project # 0588483-1 Building/Branch/Store #: Christian Science First Church

Address: 3303 Via Lido Newport Beach, Ca

Relinquished By: Greg Anderson (Print) [Signature] (Signature) 8-21-12 (Date)

Relinquished To: Olivia Sula (Print) [Signature] (Signature) 8/24/12 820AM (Date)

Group #	Sample Number	Material	Material Location	Sample Location	F/NF	Cond.	Qty.
8	CS-26	Air Cell Debris	Under Rolled FG Insulation Ceiling Crawlspace	Aud. Southeast	F	P	Unknown
	↓	↓	↓	Aud. Southwest	↓	↓	↓
9	CS-28	Vapor Barrier	Throughout	Ceiling Space	NF	G	20,000 SF
	↓	↓	↓	Hall	↓	↓	↓
	↓	↓	↓	Closet	↓	↓	↓
10	CS-31	9" White Floor Tile / Black Mastic	Loft Room	North	NF	F	70 sf
	↓	↓	↓	West	↓	↓	↓
11	CS-33	1'x1' Ceiling Tile	Throughout	Aud. Southwest	F	F	14,000 SF
	↓	↓	↓	Hallway	↓	↓	↓
	↓	↓	↓	Custodian Closet	↓	↓	↓
12	CS-36	Brown Base Cove Glue	Throughout	Sunday School	NF	G	3,800 LF
	↓	↓	↓	Sunday School	↓	↓	↓
	↓	↓	↓	Aud.	↓	↓	↓

# 3 3 1 2 1 2 1 4 6

Project Name (client): The Wieland-Davco Corp Project # 0588483-1 Building/Branch/Store #: Christian Science First Church

Address: 3303 Via Lido Newport Beach, Ca

Relinquished By: Greg Archery (Print) [Signature] (Signature) 8-21-12 (Date)

Relinquished To: Divia Saha (Print) [Signature] (Signature) 8/21/12 (Date) 8:20AM (Date)

Group #	Sample Number	Material	Material Location	Sample Location	F/NF	Cond.	Qty.
13	CS-39	Mudded Joint	Ceiling Crawl Space	NE Utility Roof Access	NF	G	7 Visible
14	CS-40	White Mosaic Sheet Flooring/ Mastic / Beige FT / Black Mastic	Floral Room	North	NF	F	80 SF
↓	CS-41			East			
15	CS-42	12" Beige FT / Black Mastic	Under Carpet Teller Room, SW Bathroom	SW Bathroom	NF	F	200 SF
↓	CS-43			Teller Room			
16	CS-44	Beige SF/Mastic	Child Care Bathroom	Child Care Bathroom	NF	F	25 SF
↓	CS-45			Child Care Bathroom			
17	CS-46	Float / Black Mastic	Sunday School, Auditorium	Sunday School Southwest Corner	NF	F	500 SF
18	CS-47	Brown Mastic	Auditorium	Aud. Southeast Entry to Stage Area			50 SF
19	CS-48	Acoustic Ceiling Plaster	Reading Room (RR) Bldg.	Committee Room	NF	G	2,600 SF
↓	CS-49		Committee Rm., Study Rm., Sales Rm.	Committee Room			
↓	CS-50			Committee Room			
20	CS-51	Wall Plaster	RR Bldg.	Committee Rm.	NF	G	4,000 SF

# 3 3 1 2 1 2 1 4 6

Project Name (client): The Wieland-Davco Corp Project # 0588483-1 Building/Branch/Store #: Christian Science First Church

Address: 3303 Via Lido Newport Beach, Ca

Relinquished By: Greg Anthony (Print) [Signature] (Signature) 8-21-12 (Date)

Relinquished To: Olivia Saha (Print) [Signature] (Signature) Spelle 8:20AM (Date)

Group #	Sample Number	Material	Material Location	Sample Location	F/NF	Cond.	Qty.
↓	CS-52			Floral			
	CS-53			Study Rm.			
	CS-54			Men's			
	CS-55			Women's			
21 ↓	CS-56	Blown in Insulation	RR Bldg. Ceiling Space	Hallway Access Area	F	F	3,000 SF
	CS-57			Hallway Access Area			
	CS-58			Hallway Access Area			
22 ↓	CS-59	Roof Debris	RR Bldg. Ceiling Space	Hallway Access Area	NF	P	3,000 SF
	CS-60			Hallway Access Area			
	CS-61			Hallway Access Area			



# 3 3 1 2 1 2 2 3

Page 1 of 2

# PSI Field Sample & Material Log Asbestos Chain Of Custody

Project Name (client): The Wieland-Davco Corp Project #: 0588483-1 Building/Branch/Store #: Christian Science First Church

Inspector: Greg Archung Sample Date: 8-12-12 <sup>6:00</sup> Address: 3303 Via Lido Newport Beach, Ca

Relinquished By: Gregory R Archung (Print) [Signature] (Signature) 8-22-12 (Date)

Relinquished To: Olivia Sala (Print) [Signature] (Signature) 8/22/12 (Date) 1:10pm (Date)

Group #	Sample Number	Material	Material Location	Sample Location	F/NF	Cond.	Qty.
23	CS-62	Roof Core	RR: Roof	South	NF	G	1,300 SF
	CS -63	↓	↓	Middle	↓	↓	↓
	CS-64	↓	↓	North	↓	↓	↓
24	CS-65	Roof Flashing Core	RR: Roof	South	NF	G	200 SF
	CS-66	↓	↓	West	↓	↓	↓
	CS-67	↓	↓	Northeast	↓	↓	↓
25	CS -68	Roof Mastic	RR Roof: Vents, Duct Seams, Parapet Vents, etc	NE Flashing Seam	NF	G	75 SF
	CS -69	↓	↓	Middle HVAC Pad	↓	↓	↓
	CS -70	↓	↓	Southeast Vent Pipe	↓	↓	↓
26	CS -71	Exterior Plaster	RR: Throughout	Southeast	NF	F	1,800 SF
	CS -72	↓	↓	East	↓	↓	↓
	CS-73	↓	↓	Northeast	↓	↓	↓

Send Analysis Results to the Attention of Greg Archung 5 Day per day  
Analyze To First Positive Same Day Analyze All Samples 24-Hour Requested Turnaround Time: 48-Hour 72-Hour 3-5 Days

#331212223

Project Name (client): The Wieland-Davco Corp Project # 0588483-1 Building/Branch/Store #: Christian Science First Church

Address: 3303 Via Lido Newport Beach, Ca

Relinquished By: Gregory R. Archey (Print) [Signature] (Signature) 8-22-12 (Date)

Relinquished To: Diana Salas (Print) [Signature] (Signature) 8/22/12 (Date)

Group #	Sample Number	Material	Material Location	Sample Location	F/NF	Cond.	Qty.
27	CS -74	Exterior Plaster	Throughout	East	NF	G	8,000 sf
	CS -75			East			
	CS -76			North			
	CS -77			Southwest			
	CS -78			South			
28	CS -79	Drywall/Joint Compound	Former Organ Motor Rm.	Southeast	NF	F	250 sf
	CS -80			Northwest			
	CS -81			Northeast			

**LABORATORY RESULTS AND CHAIN OF CUSTODY DOCUMENTATION**  
**LEAD BASED PAINT**



# LA Testing

11652 Knott Street Unit F5, Garden Grove, CA 92841

Phone/Fax: (714) 828-4999 / (714) 828-4944

[losalamitoslab@latesting.com](mailto:losalamitoslab@latesting.com)

LA Testing Order:	331212152
CustomerID:	32PRSV78
CustomerPO:	
ProjectID:	The Wieland-Davco

Attn: **Greg Archung**  
**PSI - Professional Services, Inc.**  
**6330 Gateway Drive**  
**Suite B**  
**Cypress, CA 90630**

Phone: (714) 484-8600  
 Fax:  
 Received: 08/21/12 8:20 AM  
 Collected: 8/16/2012

Project: 0588483-1 / The Wieland-Davco Corp / Christian Science First Church

## Test Report: Lead in Paint Chips by Flame AAS (SW 846 3050B\*/7000B)

Lab ID:	Analyzed	RDL	Lead Concentration	Notes
0001	8/27/2012	0.010 % wt	0.017 % wt	Site: Wall/Plaster - Throughout-Auditorium
<i>Client Sample</i> Pb-CS-01				<i>Collected:</i> 8/16/2012

Michael Chapman, Laboratory Manager  
or other approved signatory

Reporting limit is 0.010 % wt based on the minimum sample weight per our SOP. The QC data associated with these results included in this report meet the method QC requirements, unless specifically indicated otherwise. Unless noted, results in this report are not blank corrected. EMSL bears no responsibility for sample collection activities. Samples received in good condition unless otherwise noted. \* slight modifications to methods applied. "<" (less than) result signifies that the analyte was not detected at or above the reporting limit. Measurement of uncertainty is available upon request.

Samples analyzed by LA Testing Garden Grove, CA AIHA-LAP, LLC--ELLAP Accredited #101650, CA ELAP 1406



# LA Testing

11652 Knott Street Unit F5, Garden Grove, CA 92841

Phone/Fax: (714) 828-4999 / (714) 828-4944

[losalamitoslab@latesting.com](mailto:losalamitoslab@latesting.com)

LA Testing Order:	331212222
CustomerID:	32PRSV78
CustomerPO:	
ProjectID:	The Wieland-Davco

Attn: **Greg Archung**  
**PSI - Professional Services, Inc.**  
**6330 Gateway Drive**  
**Suite B**  
**Cypress, CA 90630**

Phone: (714) 484-8600  
 Fax:  
 Received: 08/22/12 1:10 PM  
 Collected: 8/22/2012

Project: 0588483-1 / The Wieland-Davco Corp. / Christian Science First Church

## Test Report: Lead in Paint Chips by Flame AAS (SW 846 3050B\*/7000B)

Lab ID:	Analyzed	RDL	Lead Concentration	Notes
0001	8/23/2012	0.010 % wt	<0.010 % wt	Site: Wall / Plaster - Throughout / Ext. - White
<i>Client Sample</i> Pb-CS-02				<i>Collected:</i> 8/22/2012
0002	8/23/2012	0.010 % wt	0.067 % wt	Site: Window / Wood - Ext. - White
<i>Client Sample</i> Pb-CS-03				<i>Collected:</i> 8/22/2012

Michael Chapman, Laboratory Manager  
or other approved signatory

Reporting limit is 0.010 % wt based on the minimum sample weight per our SOP. The QC data associated with these results included in this report meet the method QC requirements, unless specifically indicated otherwise. Unless noted, results in this report are not blank corrected. EMSL bears no responsibility for sample collection activities. Samples received in good condition unless otherwise noted. \* slight modifications to methods applied. "<" (less than) result signifies that the analyte was not detected at or above the reporting limit. Measurement of uncertainty is available upon request.

Samples analyzed by LA Testing Garden Grove, CA AIHA-LAP, LLC ELLAP 101650, CA ELAP 1406





Project Name (client): The Wieland-Davco Corp. Project #: 0588483-1 Building/Branch/Store #: Christian Science First Church  
 Inspector: Greg Archung Sample Date: 8-16-12 Address: 3303 Via Lido Newport Beach, Ca  
 Relinquished By: Greg Archung (Print) [Signature] (Signature) 8-21-12 (Date)  
 Relinquished To: Dixie Sala (Print) [Signature] (Signature) 8/21/12 (Date)  
 Analyze by Method  Method EPA 7420 (narrow band spectrometry - Pb only)  Method EPA 6010 (wide band spectrometry - all metals)

Group #	Sample Number	Material Location	Sample Location	Color <sup>1</sup>	Cond.	Qty.
1	Pb-CS-01	Wall / Plaster	Throughout / Auditorium	White	G	30,000 sf

<sup>1</sup>If multiple layers list colors from top to bottom (e.g. red/green/blue)

Send Analysis Results to the Attention of Greg Archung

Requested Turnaround Time: 5 Day Same Day 24-Hour 48-Hour 72-Hour 3-5 Days  
5 Day TAT Per Greg



# PSI Field Sample & Material Log Pb Paint Chain Of Custody

Project Name (client): The Wieland-Davco Corp. Project #: 0588483-1 Building/Branch/Store #: Christian Science First Church

Inspector: Greg Archung Sample Date: 8-21-12 Address: 3303 Via Lido Newport Beach, Ca

Relinquished By: \_\_\_\_\_ (Date) \_\_\_\_\_

Relinquished To: Divia Zula (Print) EW (Signature) 8/22/12 (Date) 1:14pm (Date)

Analyze by Method  Method EPA 7420 (narrow band spectrometry - Pb only)  Method EPA 6010 (wide band spectrometry - all metals)

Group #	Sample Number	Material Location	Sample Location	Color <sup>1</sup>	Cond.	Qty.
1	Pb-CS-02	Wall / Plaster	Throughout / Exterior	White	P	100 SF
2	Pb-CS-03	Window / Wood	Exterior	White	P	50 SF

<sup>1</sup>If multiple layers list colors from top to bottom (e.g. red/green/blue)

Send Analysis Results to the Attention of Greg Archung 5 Day Per Avg

Requested Turnaround Time: \_\_\_\_\_ Same Day \_\_\_\_\_ 24-Hour \_\_\_\_\_ 48-Hour \_\_\_\_\_ 72-Hour \_\_\_\_\_ 3-5 Days

## **CODES AND REGULATIONS – ASBESTOS AND LEAD**

## **CODES AND REGULATIONS - ASBESTOS**

Federal regulations which govern asbestos abatement work or hauling and disposal of asbestos waste materials include but are not limited to the following:

U.S. Department of Labor, Occupational Safety and Health Administration:

Asbestos Regulations

Title 29, Part 1910, Section 1001 of the Code of Federal Regulations

Final Rule

Title 29, Part 1926, Section 1101 of the Code of Federal Regulations

Respiratory Protection

Title 29, Part 1910, Section 134 of the Code of Federal Regulations

Construction Los Angeles

Title 29, Part 1926, of the Code of Federal Regulations

Access to Employee Exposure & Medical Records

Title 29, Part 1910, Section 20 of the Code of Federal Regulations

Hazard Communication

Title 29, Part 1910, Section 1200 of the Code of Federal Regulations

Specifications for Accident Prevention Signs and Tags

Title 29, Part 1910, Section 145 of the Code of Federal Regulations

Environmental Protection Agency (EPA) including but not limited to:

Worker Protection Rule

40 CFR Part 763, Subpart G  
CPTS 62044, FLR 2843-9  
Federal Register, Vol. 50, No. 134, 7/12/85  
P28530-28540

Regulation for Asbestos

Title 40, Part 61, Subpart A of the  
Code of Federal Regulations

National Emission Standard for Asbestos

Title 40, Part 61, Subpart M of the Code of Federal Regulations including NESHAP Revision;  
Final Rule, Federal Register; Tuesday, November 20, 1990.

Asbestos Hazard Emergency Response Act (AHERA)

Regulations 40 CFR 763 Subpart E

## **CODES AND REGULATIONS – ASBESTOS, continued**

U.S. Department of Transportation (DOT) including but not limited to:

Hazardous Substances: Final Rule  
Regulation 49 CFR, Parts 171 and 172

Uniform Fire Code:

Asbestos Removal  
UFC Section 87.106, 87.102

Standards which govern asbestos abatement work or hauling and disposal of asbestos waste materials include but are not limited to the following:

American National Standards Institute (ANSI)

Fundamentals Governing the Design and  
Operation of Local Exhaust Systems  
Publication Z9.2-79

Practices for Respiratory Protection  
Publication Z88.2-80

## CODES AND REGULATIONS - LEAD-BASED PAINT

Federal and state regulations which govern lead-based paint work or hauling and disposal of lead-based paint waste materials include but are not limited to the following:

### FEDERAL

Housing and Urban Development (HUD) Interim Guidelines

### OSHA

Lead In Construction  
29 CFR 1926.62

### NESHAP

Emissions Standards  
40 CFR 50.12

Lead-Based Paint Poisoning Prevention Act (LBPPPA), 1970.

Title 10 - Residential LBP Hazard Reduction Act, 1992, (amendment for LBPPPA,1970)

Resource Conservation Recovery Act (RCRA)

Title 17, California Code of Regulations (CCR), Division 1, Chapter 8: *Accreditation, Certification and Work Practices for Lead-Based Paint and Lead Hazards*